

# AVON

**+ FREE  
GIFT**

DETAILS INSIDE

CAMPAIGN 18

*new Cashmere* **Soft Focus**  
*it's all a blur.*





focus on: **you**

Look effortlessly beautiful as  
you do with new flaw-blurring  
**SOFT FOCUS FOUNDATION  
AND CONCEALER** and a  
magical **MULTI-BALM**.



**FREE**

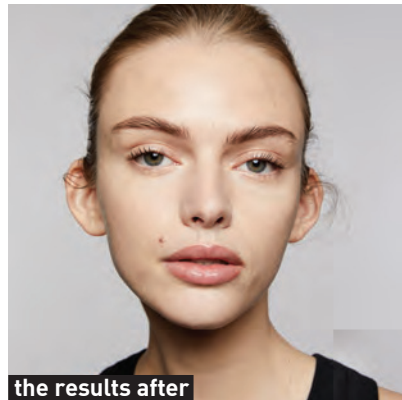
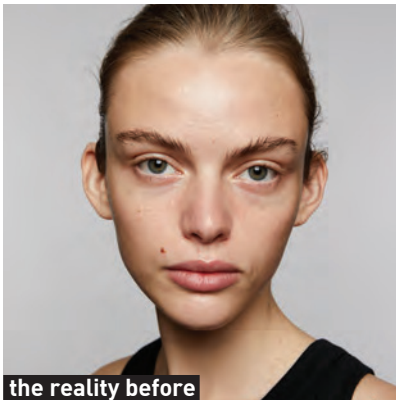
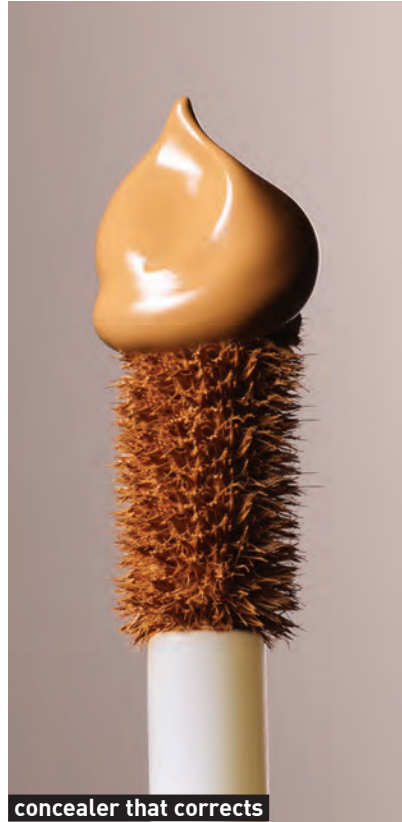
**fmg Oil Rewind Roller Ball**

**WITH ANY TWO FACE MAKEUP PURCHASES,  
PAGES 4-11. \$19 VALUE. LIMITED QUANTITIES.**

Sold separately on page 27.

Featured shades: Soft Focus Foundation  
in N1 and Full Coverage Concealer in C1.





Get stunning results with incredible ingredients, rich pigments and plush textures. With inclusive flexible shades and a variety of undertones, fmg Cashmere is luxury in the shade of you.





*focus on:* blur

Featured shade: W5.





- 24 hours of breathable wear
- Visibly blurs pores, fine lines and wrinkles
- Soft-focus satin finish
- Flexible shades to match any skin and undertone

**NEW**

## fmg Cashmere Soft Focus Foundation

Weightless hydrating formula with 2% niacinamide and oil-controlling silica powders. Helps to camouflage the appearance of imperfections and redness without transferring for smooth, even all-day complexion perfection. Blends effortlessly and never looks cakey. Buildable medium-to-full flexible coverage. Formulated without parabens and talc. 1.01 fl. oz. reg. \$25

**\$20**

**+ FREE OFFER**  
see page 2

Available in Cool (C), Neutral (N), Warm (W)  
and Warm Olive (WO) undertones.

W05  
530-879

C5  
530-940

N6  
531-325

W6  
531-526

N7  
531-660

C7  
531-640

W8  
531-689

W08  
531-727

N9  
531-803











W9  
531-731

N10  
531-841

W10  
531-822





	
C1 531-856	N2 531-947
	
W02 532-010	C3 532-044
	
W3 532-116	N4 532-120
	
W5 532-211	N6 532-230
	
W7 532-719	N8 532-867

Available in Cool (C), Neutral (N), Warm (W) and Warm Olive (WO) undertones.

## focus on: **flawless**

Helps to camouflage the appearance of imperfections, dark circles and redness without settling or transferring.

**NEW**

### fmg Cashmere Soft Focus Full Coverage Concealer

24 hours of flawless, comfortable, breathable wear. Creamy, hydrating formula with 2% niacinamide, amino acids and lipids visibly blurs pores, fine lines and wrinkles. Blends effortlessly and never looks cakey. Buildable full coverage with a soft-focus, natural satin finish. Formulated without parabens and talc. .24 oz. net wt. reg. \$18

**\$14**

**+ FREE OFFER**  
see page 2

6 | C18

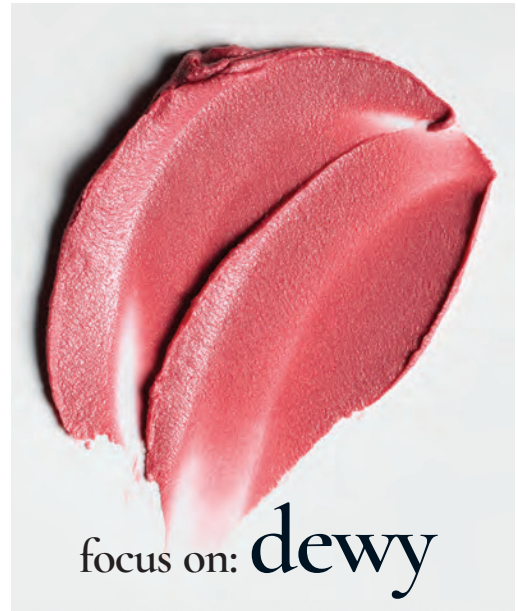


Featured shade: C1.





Featured shades: (on model) Beach Blush on lips and Cranberries on cheeks; (right) Bouquet.



focus on: dewy

Add a sheer wash of color to face and lips

**NEW**

**LIMITED EDITION**

**fmg Cashmere Multi-Balm**

A blend of seven skin-loving peptides and moisturizing ingredients helps to visibly enhance, smooth and refine the complexion. Soft-focus tinted formula with light coverage complements your skin so the real you comes through. Dewy luminous finish with no greasy after-feel. Vegan.

Formulated without parabens and sulfates.  
.91 oz. net wt. reg. \$25

**\$20**

**+ FREE OFFER**  
see page 2



*focus on:* perfection



**FREE**  
fmg Oil Rewind  
Roller Ball  
Details on page 2.

Featured shades: fmg Cashmere Compact Powder Foundation  
in N110 and Cream Concealer in Fair Neutral.



**fmg Cashmere  
Under Eye Primer**

Helps diminish the look of dark circles and fine lines. With caffeine, green tea extract and a vegan alternative to collagen. Formulated without parabens, phthalates and fragrance.

.317 oz. net wt.

**010-429**

reg. \$24

**\$19**



**fmg Cashmere  
Multi-Peptide  
Eyeshadow Primer**

Keeps eyeshadow in place and intensifies the color. Skin-loving ingredients help to reduce the appearance of fine lines and visibly plump and strengthen the skin barrier. Sheer formula with Matrixyl 3000 peptide blend, hyaluronic acid, collagen and panthenol. Formulated without parabens and talc.

.31 oz. net wt. **906-385**

reg. \$24

**\$19**



**fmg Cashmere  
Multi-Peptide Face Primer**

Preps skin. Revitalizing ingredients help to smooth the appearance of fine lines and pores and visibly plump and strengthen the skin barrier. Sheer gel formula with Matrixyl 3000 peptide blend, hyaluronic acid, collagen and niacinamide. Formulated without parabens, talc and fragrance. 1 fl. oz. **739-284**

reg. \$24

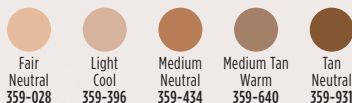
**\$19**



**fmg Cashmere Cream Concealer**

Long-wearing formula helps to camouflage dark circles, acne and uneven skin tone. With hyaluronic acid and collagen. Full-coverage. Matte finish. Formulated without parabens, phthalates, talc and fragrance. .21 oz. net wt. reg. \$17

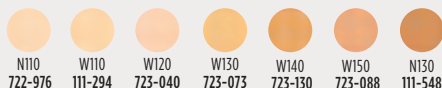
**\$13**



**fmg Cashmere Compact Powder Foundation\***

Shine-control formula can be used wet or dry. Buildable medium-to-full coverage. Matte finish. With antioxidant botanicals. Sponge applicator. Formulated without parabens, phthalates and sulfates. .40 oz. net wt. reg. \$36

**\$24.50**



\*Available in Cool (C), Neutral (N) and Warm (W) undertones.



Featured shade:  
fmg Match Tint Radiant  
Tinted Moisturizer in  
Medium Deep.

### fmg Match Airbrush Retouch Tinted Primer

Helps soothe and even skin tone and provides a lit-from-within dewy complexion. With skin-caring ferulic acid, panthenol (provitamin B5) and niacinamide. Formulated without parabens, phthalates, fragrance and talc. 1 fl. oz. reg. \$21

**\$16.99**

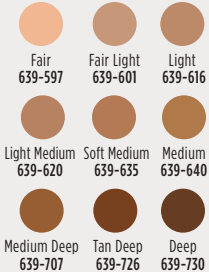


### fmg Match Tint Radiant Tinted Moisturizer

Brightens skin tone, boosts moisture and blurs flaws. With passion fruit, chia and sunflower seed oils, and vitamin E and panthenol (provitamin B5). Buildable coverage. Radiant finish. Formulated without parabens. 1 fl. oz. reg. \$23

**\$14.99**

FULL RANGE  
OF FLEXIBLE SHADES!



### fmg Match Filter Serum Tint Foundation

Instantly hydrates, blurs flaws and evens tone. With hyaluronic acid, vitamin E and berry complex. Buildable coverage. Demi-matte finish. Formulated without talc, parabens and fragrance. .31 oz. net wt. reg. \$21

**\$16.99**



### fmg Match Prime Face Perfector

Flaw-blurring mattifying oil-free formula visibly minimizes pores and fine lines. Sheer coverage. Matte finish. Formulated without parabens. 1 fl. oz. 103-744 reg. \$19

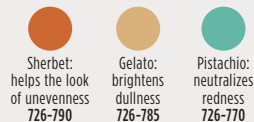
**\$14.99**



### fmg Match Wand Correcting Stick

Neutralizes unevenness, brightens and color corrects. Long-wearing formula with shea butter and vitamin E. Formulated without parabens, phthalates and sulfates. .21 oz. net wt. reg. \$19

**\$14.99**







# powder power

New & improved talc-free formulas.

## fmg Match Dust Finishing Powder

Loose powder helps to set makeup and perfect skin. Translucent formula with light-diffusing ingredients known to help blur the appearance of imperfections and silica to help control shine. Goes on smooth and provides a naturally radiant finish. Sheer to light coverage. Formulated without parabens, phthalates, sulfates, fragrance and talc. Vegan. .16 oz. net wt. reg. \$20

**\$15.99**



Translucent  
Fair-Light  
921-058



Translucent  
Medium-Deep  
921-062

## fmg Match Set Finishing Powder

Loose powder blends effortlessly, creating an invisible veil that sets makeup for lasting wear. Translucent formula infused with light-diffusing ingredients known to help blur the appearance of imperfections and silica to help control shine. Goes on smooth and provides a soft matte finish. Formulated without parabens, phthalates, sulfates, fragrance and talc. Vegan. .16 oz. net wt.

**Invisible 750-975**

reg. \$20

**\$15.99**



**FREE**

fmg Oil Rewind  
Roller Ball

Details on page 2.



power up  
your lips

Featured shade: Blaze.



#### MATTE



Chili 171-355   Sunset Mauve 171-360   Willow 171-450   Wild Orchid 171-431   Terra Nova 171-340   Garnet Sky 171-393

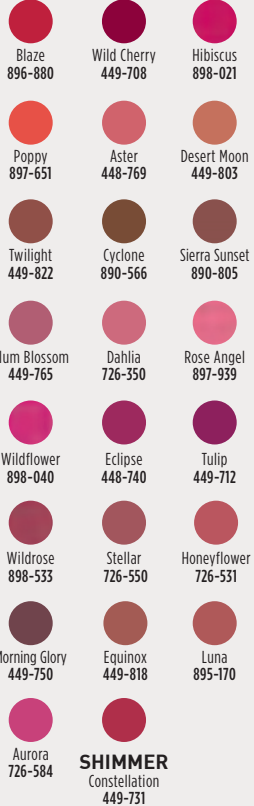


#### fmg Glimmer Lipstick

Lightweight formula with pomegranate extract. Buildable coverage. Available in **Matte**, **Satin** or **Shimmer** finishes. Formulated without parabens and sulfates. .10 oz. net wt. reg. \$15

**\$11.49 each**

#### SATIN



Blaze 896-880   Wild Cherry 449-708   Hibiscus 898-021  
Poppy 897-651   Aster 448-769   Desert Moon 898-803  
Twilight 449-822   Cyclone 890-566   Sierra Sunset 890-805  
Plum Blossom 449-765   Dahlia 726-350   Rose Angel 897-939  
Wildflower 898-040   Eclipse 448-740   Tulip 449-712  
Wildrose 898-533   Stellar 726-550   Honeyflower 726-531  
Morning Glory 449-750   Equinox 449-818   Luna 895-170









Aurora 726-584  
**SHIMMER**  
Constellation 449-731



### GO. by Glimmer Lacquered Lip Gel

Ultimate fusion of shiny gloss and tinted lip color in one. Non-sticky formula with gel-like texture glides on and helps to leave lips feeling soft and cushioned. Infused with a Super-Fruit Extract Complex that includes noni fruit, passionflower and amla fruit extract. Buildable coverage with a glossy finish. Formulated without parabens, talc, sulfates, phthalates and mineral oil. .14 oz. net wt. reg. \$17

**\$12.99**

			
Soft 922-327	Fruity Floral 922-312	Whisper Pink 750-114	Sunset Rose 750-205
			
Waffle Cone 750-023	Orchid Bloom 750-320	Seeing Red 750-391	Currant Crush 750-478



Best of  
K-Beauty



### GO. by Glimmer Whipped Lip & Cheek Tint

Ultimate multi-tasker delivers beautiful color to lips and cheeks. With apple fruit extract, an antioxidant known to help promote smooth, glowing skin. Full pigmented coverage with a velvety matte powder finish. Formulated without parabens, talc, sulfates, phthalates and mineral oil. .14 oz. net wt. reg. \$18

**\$13.99**

			
Velvet Vanilla 922-293	Cherry Cocktail 922-289	Frozen Pink 749-994	Blushed 749-870
			
Hibiscus Tea 750-019	Peony 749-865	Flora 749-956	Jam 749-850

## NEW

### fmg LOVE Lip Butter Crème

Ultra-creamy yet weightless formula, infused with a nourishing blend of jojoba, sweet almond, apricot, olive and evening primrose oils, mango extract and shea butter, melts into lips and drenches them in moisture, leaving them buttery soft with a kiss of glossy color. Click pen applicator. Vanilla scented. Formulated without parabens, gluten, talc, sulfates and phthalates. .10 oz. net wt. reg. \$19

**\$14.99 each**



Girlfriend 286-329  
Enchanted 286-333  
Cherished 286-405  
Sweetest 286-390



### fmg LOVE Lip Butter

Sheer, high-shine formula with cupuacu seed butter, mango extract, and apricot kernel and olive fruit oils. Buildable coverage. Vanilla scented. Formulated without parabens, sulfates and phthalates. .09 oz. net wt. reg. \$19

**\$14.99**



Tease 063-132  
Rendezvous 063-166  
Flirtatious 063-219  
Love Affair 063-242  
Pucker Up 063-128  
Secret Crush 063-147



### fmg Glimmer Lip Conditioner

Leaves dry, cracked lips feeling soft and smooth. With mango seed butter, vitamin E, and jojoba and sunflower seed oils. Formulated without parabens, sulfates, phthalates and talc. .12 oz. net wt.

**794-578**  
reg. \$12

**\$9.49**



### fmg Glimmer Birthday Balm Lip Crayon

Sheer, soft shine formula with non-GMO shea butter. Formulated without parabens and gluten. .1 oz. net wt. reg. \$17

**\$12.99**

**ANY 2 FOR \$18**

mix or match,  
any 2 for discount to apply.



Birthday Suit 375-706  
Cupcake 950-000  
Surprise! 375-710  
Birthday Post 375-730  
Lovin' Life 698-867  
Fine Wine 375-725  
Glammed Up 953-268  
VIP 951-265  
Private Party 949-990  
PYT 375-691







Featured  
shade:  
Persistent.



## MATTITUDE IS BACK NEW & IMPROVED TRANSFER-RESISTANT FORMULA

### fmg Glimmer Mattitude Liquid Lipstick

Lock in vivid, saturated color with a comfortable, non-drying, transfer-resistant formula that wears all day without fading or feathering. With vitamin E and a blend of olive and sunflower oils to help smooth and soften lips. Glides on effortlessly, delivering full coverage in one swipe with a velvety soft matte finish. Formulated without parabens, sulfates and phthalates. Vegan. .12 fl. oz. reg. \$18

**\$13.99**



Relentless  
418-752



Driven  
419-050



Persistent  
418-771



Resolute  
419-228



Ambitious  
419-266



Tenacious  
419-232



Devoted  
418-896

# all eyes on you



## **fmg LOVE at 1st Sight Eyeshadow Palette**

Nine buildable matte and shimmer shades create depth and dimension. Versatile formula with antioxidant vitamin E blends seamlessly. Formulated without parabens, phthalates, talc and fragrance. .23 oz. total net wt. **786-076** reg. \$28

**\$20**



### fmg Glimmer Liquid Eyeshadow

Silky lightweight formula glides on effortlessly for ultrafine pearly color that lasts all day. Water-resistant. Will not smudge or crease. No messy fallout. Buildable coverage from a sheer wash of soft sateen sheen to full-on shimmery wow. Formulated without parabens, phthalates, sulfates and talc. Available in Matte Sateen or Shimmer finish. .07 fl. oz. reg. \$14

**\$10.99 \$7.99**



### BEST-SELLING SHIMMER SHADES ARE BACK!

<b>SHIMMER</b> Pink Topaz 324-608	<b>SHIMMER</b> Crystal Lilac 324-593	<b>SHIMMER</b> Rose Gold 324-521	<b>SHIMMER</b> Fool's Gold 324-517	<b>SHIMMER</b> Diamond Dust 324-574
<b>MATTE SATEEN</b> Sunstone 324-392	<b>MATTE SATEEN</b> Moonstone 324-612	<b>MATTE SATEEN</b> Citrine 324-631	<b>MATTE SATEEN</b> Tiger's Eye 324-646	

### fmg CathyCat Shadow Gaze Matte Color Stick

Long-wearing formula will not budge or smudge. Buildable and blendable coverage. Matte finish. Formulated without parabens and fragrance. .0476 oz. net wt. reg. \$19

**\$14.99 \$10.99**

<b>Berry</b> 958-619	<b>Azure</b> 959-213	<b>Mauve</b> 958-331	<b>Rosewood</b> 958-547
<b>Taupe</b> 958-126	<b>Espresso</b> 958-896	<b>Buff</b> 956-912	



### fmg CathyCat Nine Lives Precision Liquid Eyeliner

Slim-tip brush delivers a precise line of water- and sweat-resistant color that will not skip, tug or smudge. Formulated without parabens, sulfates, phthalates and talc. .068 fl. oz. **Blackest Black 800-829** reg. \$18

**\$14.99 \$10.99**



### fmg Glimmer Eyeshadow Quad

Soft powder formula lasts all day. No messy fallout. Buildable coverage. Formulated without parabens and fragrance. Available in Multi and all Matte finishes. .21 oz. total net wt. reg. \$18

**\$13.99 \$10.49**

<b>MULTI</b> Mistress 883-902	<b>MULTI</b> Goddess 901-330	<b>MULTI</b> Muse 880-459	<b>MULTI</b> Minx 885-738	<b>MULTI</b> Darling 880-789
<b>MULTI</b> Maven 884-750	<b>MULTI</b> Temptress 884-731	<b>MULTI</b> Idol 900-975	<b>MULTI</b> Vixen 901-474	<b>MULTI</b> Siren 901-493
<b>MATTE</b> Calypso 741-261	<b>MATTE</b> Tigress 741-333	<b>MATTE</b> Bombshell 741-170	<b>MATTE</b> Icon 741-439	

For Multi Quad finishes, visit Avon.com.

**GET AN EXTRA 25% OFF**

Final prices as shown.

# line & define

## fmg Glimmer Liners for Lips, Eyes and Brows

Long-wearing. Retractable. Formulated without parabens, sulfates and talc. Each, .01 oz. net wt. reg. \$9

**\$4.49 each**

### LIPLINERS

 Honey Peach 327-721	 Lava Red 327-740	 Passion Red 327-650	 Red Brick 330-451
 Chocolate 330-667	 Simply Spice 330-614	 Mystery Mauve 330-538	 Candy Apple 327-903
 Pink Bouquet 330-356	 Merlot 330-284	 Perfect Plum 330-887	 Au Naturel 330-318

### EYELINERS

 CREAM Emerald Green 334-332	 CREAM Starry Night 334-347	 CREAM Saturn Grey 334-328	
 CREAM Majestic Plum 334-313	 CREAM Cosmic Brown 334-351	 CREAM Blackest Black 334-366	
 DIAMOND Sterling 331-960	 DIAMOND Teal Sparkle 331-606	 DIAMOND Olive 331-940	 DIAMOND Twilight Sparkle 331-553
 DIAMOND Sugar Plum 331-625	 DIAMOND Purple Rain 332-071	 DIAMOND Smoky Diamond 331-280	 DIAMOND Brown Sugar 331-568
 DIAMOND Black Ice 331-610	 WATERPROOF Blue Skies 334-237	 WATERPROOF Raisin 332-200	 WATERPROOF Brown Chocolate 332-124
 WATERPROOF Seafoam Green 334-241	 WATERPROOF Smoky Grey 332-162	 WATERPROOF Blackest Night 229-491	 WATERPROOF Midnight Blue 332-158

### BROW DEFINERS

 Light Blonde 331-109	 Blonde 331-113	 Tawny 331-128
 Light Brown 331-151	 Dark Brown 331-147	 Brunette 331-242







**fmg Glimmer  
Liquid Color Eyeliner Pen**  
Felt-tip applicator glides on smoothly, with precise application. Highly pigmented, lightweight formula. Smudge-, transfer- and sweat-proof.\* Formulated without parabens, talc, mineral oil, phthalates and fragrance. .04 fl. oz. reg. \$13

**\$10.99**



\*Based on Consumer Home Use Test Study of 62 applicants.



**fmg Glimmer  
Liquid Eyeliner**  
Quick-drying, long-lasting formula. Transfer-, sweat- and waterproof. Matte finish. Formulated without parabens, phthalates and fragrance. .037 fl. oz.

**Blackest Black  
354-380**  
reg. \$13

**\$10.99**



**fmg Glimmer  
Always On Point Eyeliner**  
Built-in sharpener. Smudge- and waterproof. Formulated without parabens, sulfates and talc. .01 oz. net wt. **Black 016-389** reg. \$10

**\$7.99**

## MICRO TIP

creates realistic hair-like strokes

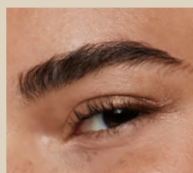


## MATTE FINISH

buildable, long-wearing, creamy, yet firm formula

## SPOOLIE

blends and grooms for a natural look



\*\*Based on Consumer HUT Study of 22 applicants.

**fmg Glimmer Fine Line Brow Pencil**  
Sweat- and smudgeproof, yet easy to remove.\*\* Retractable. Vegan. Formulated without parabens, talc, sulfates, fragrance and mineral oil. .0032 oz. net wt. reg. \$10

**\$6.99**





bold brows &  
lush lashes



**fmg LOVE Hi-Brow Tinted Brow Gel**  
24-hour water-resistant formula with heart-shaped fibers, clay and vitamin E. Won't clump, smudge or flake. Formulated without parabens, phthalates and fragrance. .11 fl. oz. reg. \$19  
**\$14.99**

			
Blonde 792-499	Soft Brown 792-522	Medium Brown 792-537	Brown Black 792-556



**fmg LOVE Hi-Brow Sculpting Brow Gel**  
Clear formula with aloe and hyaluronic acid. Flake-proof. Formulated without parabens, phthalates and fragrance. .11 fl. oz. **536-695** reg. \$19  
**\$14.99**



**fmg LOVE at 1st Lash Waterproof Mascara**  
Lash-loving, waterproof formula with volumizing and lengthening fibers. With Lashrez, olive oil and vitamin E. Won't clump, smudge or flake. Formulated without parabens and sulfates. .29 fl. oz.  
**Blackest Black 480-953**  
reg. \$19  
**\$14.99**



**fmg LOVE at 1st Lash Mascara**  
Lash-loving volumizing and lengthening fibers. With lycopene, olive oil and vitamin E. Won't clump, smudge or flake. Formulated without parabens and sulfates. .3 fl. oz.  
**Blackest Black 698-670**  
reg. \$19  
**\$14.99**



**fmg Cashmere  
Eyelash Primer**

Nourishing formula with biotin and collagen amino acids helps to keep lashes looking healthy and strong. Maximizes the performance of any mascara for gorgeous, lush lashes. Formulated without parabens, sulfates and talc. .35 fl. oz. **324-369** reg. \$24

**\$19**



**fmg Cashmere  
Ultimate Volume Mascara**

Volumizing formula with biotin and a vegan alternative to collagen helps to keep lashes looking healthy and strong. Glossy black finish. Formulated without parabens, sulfates and talc. .27 fl. oz. **Rich Black 153-736** reg. \$24

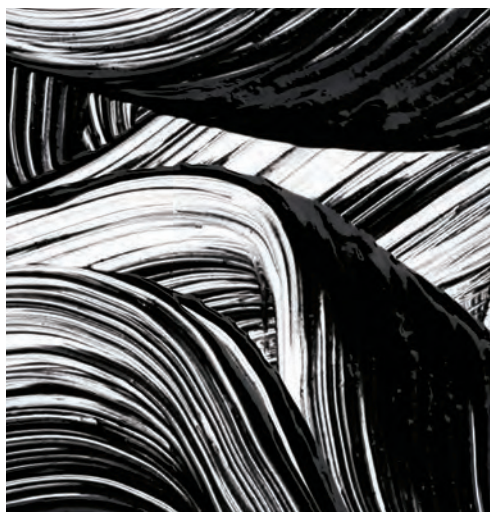
**\$19**



**fmg Glimmer  
SuperShock  
Volumizing Mascara**

Lash-building formula with plumping fibers. High-gloss finish. Won't clump, smudge or flake. Formulated without phthalates and fragrance. .338 fl. oz. **Black 698-829** reg. \$13

**\$10.99**



**fmg Glimmer  
SuperExtend  
Nourishing Mascara**

Long-wearing lengthening formula with vitamin E, argan and coconut oils. Won't clump, smudge or flake. Formulated without sulfates and talc. .237 fl. oz. **Black 698-848** **Brown Black 698-852** reg. \$13

**\$10.99**



**fmg Glimmer  
Wash-Off  
Waterproof Mascara**

Waterproof volume. Washes off easily with soap and water. Formulated without phthalates, fibers and fragrance. .21 oz. net wt. **Black 535-560** reg. \$13

**\$10.99**





at first blush...

### fmg Glimmer Be Blushed Cheek Color

Creamy formula with vitamin E. Buildable coverage. Dewy finish. Formulated without parabens, phthalates and fragrance.

.14 oz. net wt. reg. \$17

**\$12.99**



Icy Petal  
022-854



Blushing Nude  
022-911



Tropical Peach  
022-964



Golden Rose  
022-840



Crushed Berry  
022-945



Tropical  
Peach



Petal Pink

### fmg Glimmer Powder Blush

Weightless formula with ultrafine pearl and vitamin E. Buildable coverage. Matte finish. Formulated without parabens, phthalates and fragrance.

.28 oz. net wt. reg. \$15

**\$11.99**



Petal Pink  
618-209

Rosé

### fmg Glimmer

#### Powder Illuminator

Lightweight buildable formula with vitamin E. Radiant finish. Formulated without parabens, phthalates and fragrance.

.35 oz. net wt. reg. \$15

**\$11.99**



Rosé  
463-628



Prosecco  
905-580



### fmg Glimmer

#### Lip & Cheek Stain

Highly pigmented, long-wearing gel formula. Brush-tip applicator. Transfer-proof. Formulated without parabens and fragrance.

.19 fl. oz. reg. \$17

**NOW \$9.49**



Plumeria  
628-851

### fmg LOVE Glow Balm Duo Illuminating Stick

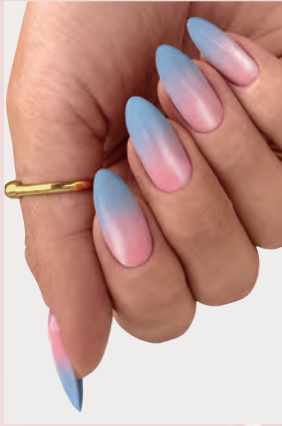
Dual-ended for highlighting and definition. Sheer formula with blend of pomegranate extract, mango and shea butter, vitamins E and C, and avocado oil. Soft, pearlescent finish. Formulated without parabens, phthalates and fragrance.

.28 oz. total net wt.

924-573 reg. \$22

**\$16.99**





Carnation  
Constellation

## out of this world nails

### fmg Glimmer Nail Lacquer

Nail-strengthening, long-wearing, no-chip formula. Gel-like cushion texture. Formulated without parabens and phthalates. .4 fl. oz. reg. \$12

~~\$9.49~~ **\$6.99 each**

 **SHIMMER**  
Carnation  
Constellation  
042-897

 **SATIN**  
AstroNautical  
Blue  
042-878

 **SATIN**  
Magenta  
Retrograde  
042-882

 **SATIN**  
Full Moon  
Flush  
018-730

 **SATIN**  
Night Sky  
Berry  
602-658

 **SATIN**  
High  
Magnitude  
Mauve  
018-840

 **SATIN**  
Supernova  
Red  
018-267



AstroNautical  
Blue



Magenta  
Retrograde

**GET AN EXTRA**



# LIMITED EDITION

## fmg Glimmer

### Glitz A-Peel Nail Lacquer

Glittery quick-dry formula. No harsh acetone or remover needed. Glossy finish. Formulated without parabens, toluene, formaldehyde and camphor. .4 fl. oz. reg. \$13

~~\$9.99~~ **\$7.49**



Leading Lady  
538-430



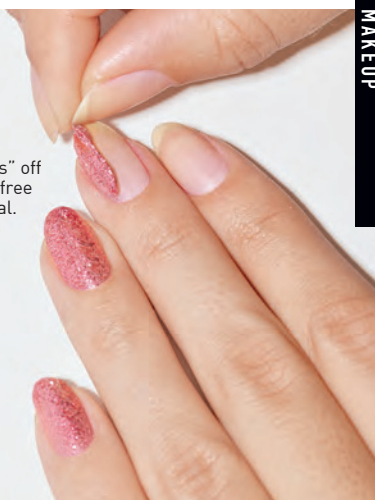
Best in Class  
538-459



Newlywed  
538-425



just "peels" off  
for fuss-free  
removal.



## fmg Glimmer

### Nourished Nail Cuticle Oil

Nourishing treatment for dry, damaged cuticles. Fortified with safflower oil to help restore and condition nails and cuticles. Formulated without phthalates, sulfates, parabens, toluene, formaldehyde and camphor. .4 fl. oz. 612-894 reg. \$14

**\$10.99**



## fmg Glimmer

### Nail Base & Top Coat

Two-in-one base and top coat primes and shields nails. Glossy finish. Formulated without parabens and phthalates. .4 fl. oz. 018-161 reg. \$12

~~\$9.49~~ **\$6.99**



## fmg Glimmer

### Nail Air Dry Drops

Need a fast finish? Accelerate your dry time with just a drop or two! Helps prevent smudges and nicks. Formulated without phthalates, sulfates, parabens, toluene, formaldehyde and camphor. .4 fl. oz. 612-913 reg. \$14

**\$10.99**



## fmg Glimmer

### Nail Lacquer Eraser Pen

For a clean and perfected mani. Won't dry out nails or cuticles. Formulated without parabens and phthalates. .135 fl. oz. 704-443 reg. \$12

~~\$9.49~~ **\$6.99**



**25% OFF** on selected items. Final prices as shown.

# brush with greatness

## fmg Complexion Blending Brush

Dual-ended: Rounded buffing foundation brush and concealer brush. 6½" L. Synthetic bristles. **933-210** reg. \$24

**\$18.99**

## fmg Precision Eye Brush

Dual-ended: Pointed pencil brush and angled eyeliner brush. 5¼" L. Synthetic bristles. **933-187** reg. \$17

**\$12.99**

## fmg Eyeshadow Blending Brush

Dual-ended: Crease brush and allover eyeshadow brush. 6" L. Synthetic bristles. **933-320** reg. \$17

**\$12.99**

## fmg Blush & Contour Brush

Dual-ended: Angled contour brush and tapered, oval blush brush. 7½" L. Synthetic bristles. **933-259** reg. \$23

**\$17.99**



## fmg Kabuki Brush

Soft, angled brush for pressed or loose powder formulas. Retractable with protective cap. 3¾" L x 1" diam. Synthetic bristles. **732-370**

reg. \$20

**\$15.99**



## fmg Flawless Complexion Sponge

Dual-ended: Allover makeup application rounded side, and contouring and concealing flat sides. 2½" L x 1½" W. 100% PU, latex-free. **140-160** reg. \$11

**\$8.49**



## fmg Makeup Remover Wipes

With vitamin E and aloe, chamomile, cucumber, marshmallow root and oat extracts. Resealable pack of 24 wipes. Formulated without parabens, gluten, sulfates, phthalates and fragrance. **333-867** reg. \$12

**\$8.49**



## Daily Beauty Tools Tweezers

Amp up your beauty routine with angled tweezers. Stainless steel. 3½" L. **747-020**

reg. \$4

**\$2.99**



### fmg Oil Rewind Roller Ball

Reusable 360° rotating volcanic-stone roller instantly absorbs oil and grease without disturbing makeup. 3" L x 1" W. Plastic handle, protective cap. Imported.

**508-294**  
reg. \$19

**\$14.99**



### fmg Waterproof Lip & Eye Makeup Remover

Dual-layer oil and water makeup remover leaves skin fresh and clean. With centella asiatica and lavender extracts. Formulated without mineral oil, tar, talc and parabens.

3.7 fl. oz.

**352-243**

reg. \$12

**\$8.49**



### fmg Express Makeup Brush Wash

Easily removes dirt, oil and makeup. With aloe vera and green tea extract. Formulated without alcohol and sulfates.

1 fl. oz. **141-368**

reg. \$15

**\$11.99**



### fmg Moisturizing Eye Makeup Remover Lotion

Cleans, refreshes and moisturizes as it whisks away eye makeup.

Formulated without parabens, sulfates and phthalates. 2.5 fl. oz.

**037-978**

reg. \$8

**\$6.49**



### fmg Set & Fix Spray

Controls oil and helps keep makeup smudge-proof. Non-greasy, non-sticky.

Formulated without parabens, sulfates, phthalates and silicones.

1.7 fl. oz. **416-707**

reg. \$15

**\$10.99**



### fmg Unready Makeup Remover Cloth

Dual-sided. Reusable and travel-friendly. 100% polyester.

9 7/8" sq. Machine wash and dry. Imported.

**230-176**

reg. \$15

**\$11.99**







**Anew Vitamin C  
Brightening Eye Cream**

**FREE**

WITH ANY \$30 PURCHASE  
PAGES 29-35. \$34 VALUE.  
LIMITED QUANTITIES.

Also sold separately.



**DIMINISHES**  
the look of dark circles

**Anew Vitamin C  
Brightening Eye Cream**

Under-eye area looks  
brighter and more  
even-toned. .5 fl. oz.

953-602 reg. \$34

~~\$23.99~~ **\$17.99**

**GET AN EXTRA 25% OFF**

Final price as shown.

**RESCUES**  
skin from the look of drabness

**Brightening Serum**

Skin is visibly energized and brightened with the power of 10% pure vitamin C. 1 fl. oz.

522-066 reg. \$44

~~\$27.99~~ **\$20.99**



**PEELS**  
away dullness

**Anew Vitamin C Peel Pads**

With PHA and pineapple extract, vitamin C, panthenol and glycerin. Exfoliates and

helps visibly brighten.

4.3 fl. oz. 70 pads.

169-143 reg. \$28

~~\$22.99~~ **\$16.99**



**ONE SMOOTH KISS**  
for healthy-looking lips

**Anew Vitamin C  
Antioxidant Lip Treatment**

Nourishes lips with vitamins C and E. .13 oz. net wt. 784-547 reg. \$14

~~\$9.99~~ **\$7.49**



**ILLUMINATES**  
as it moisturizes and blurs imperfections

**Anew Vitamin C Illuminating  
Priming Moisturizer**

With skin-smoothing silicones. Use after Brightening Serum.

Wear alone or under

makeup. 1.7 fl. oz.

914-671 reg. \$34

~~\$23.99~~ **\$17.99**





# triple power:

antioxidants 7% vitamin C, 2% ferulic acid and vitamin E



## TARGETS

dark spots,  
discolorations  
and dullness

### Anew Vitamin C Targeted Skin Brightener

Suitable for sensitive  
skin. 0.5 fl. oz.

169-177

reg. \$34

~~\$23.99~~ **\$17.99**

TARGETED  
SKIN BRIGHTENER  
SOIN  
ILLUMINATEUR  
CIBLÉ POUR  
LA PEAU  
15ml / 0.5 fl.oz. U.S.

**AN EXTRA 25% OFF** Final prices as shown.

A close-up, high-angle shot of a woman with dark, curly hair, smiling warmly at the camera. She is wearing a bright yellow, ribbed, sleeveless top. Her hands are resting on her knees, which are pulled up towards her chest. The background is a plain, light color.

# every body:

Get ready to look luminous all over with the  
Super C team! We've got you covered.



**MELTS INTO BODY for a visibly smooth, radiant finish****Anew Vitamin C Dry Body Oil**

Soothing sunflower seed and jojoba oils help keep skin feeling supple. 3.4 fl. oz. **074-432** reg. \$34

**\$19.99 \$14.99**

**SEE RADIANCE RESTORED smooths on like butter****Anew Vitamin C Nourishing Body Butter**

With hydrating shea butter and niacinamide, plus vitamins C and E to help restore radiance. Fruity-floral and citrus scent. 7.8 fl. oz. **443-767** reg. \$32

**\$20.99 \$15.49**

**SUPER EXFOLIATOR oh, glow on!****Anew Vitamin C Glow Body Scrub**

Sugar-based formula with pineapple and papaya enzymes and coffee seed extract exfoliates dry, dull skin. Citrus scent. 9 oz. net wt. **443-752** reg. \$36

**\$20.99 \$15.49**



See page 29. **FREE GIFT + AN EXTRA 25% OFF** Final prices as shown.



**HYDRATING SERUM +  
NIGHTTIME MOISTURIZER**

**Anew Platinum Night Cream**

Visibly resculpts sagging jawline and dramatically reduces the look of deep horizontal neck lines. 1.7 oz. net wt.

**Avon Solutions Nurtura Serum**

With skin-nourishing ingredients known to help combat dryness and flakiness, and help hydrate. 1 fl. oz.

**BOTH FOR \$30**

**\$60 VALUE**

**397-980**



**squeeze  
the day**

Pick your pairs, then brighten up your eyes with a vitamin C-infused eye cream—or add any of our vitamin C formulas (pages 29–33)—to your regimen and brighten up your day!



## BRIGHTENING SERUM + NIGHTTIME MOISTURIZER

### Avon Solutions Banishing Serum

Contains arbutin, niacinamide and licorice extract, ingredients known to help improve the appearance of dark spots and uneven skin tone. 1 fl. oz.

### Anew Ultimate Multi-Performance Night Cream

It works while you sleep to revive and recreate the look of youthful skin. 1.7 oz. net wt.

## BOTH FOR \$30

**\$60 VALUE**

**397-961**



## WRINKLE CORRECTOR + EXFOLIATOR

### Isa Knox Anew Clinical

#### Revitalize & Reveal Advanced Wrinkle Corrector

In just two weeks, wrinkles appear reduced. 1.7 fl. oz.

### Isa Knox Anew Clinical

#### Revitalize & Reveal Extra Strength Retexturizing Peel

Results similar to a 35% pro glycolic peel.\* 30 fragrance-free pads. 2" diam.

## BOTH FOR \$30

**\$80 VALUE**

**397-995**

\*In 6 out of 8 attributes tested over a 7-week period.



## CLEANSER + FIRMING CREAM

### Rice Water Bright Mild Cleansing Water

Removes makeup and impurities via the micellar method, so no need to rinse off! Tired-looking, dull skin appears radiant and revitalized. 16.9 fl. oz.

### Isa Knox Anew Clinical Collagen Booster Firming Cream

With moisturizing and skin-plumping niacinamide and squalane. Hygienic, airless pump. 1.7 fl. oz.

## BOTH FOR \$30

**\$63 VALUE**

**398-001**



93% of women  
believe  
it dramatically  
improves  
skin's overall  
appearance.\*



**Anew Power Serum**

Visibly improves wrinkles,  
radiance, firmness  
and texture. Use AM and PM  
after cleansing, before  
moisturizing. 1 fl. oz.  
838-047 reg. \$45

**\$29.99**

\*Based on those who expressed an opinion  
in a consumer-perception study.





# our highest sun protection for face and body



**Isa Knox Anew Solaire  
Everyday Face  
Protection Lotion  
Broad Spectrum  
SPF 50**  
1.7 fl. oz. 911-400  
reg. \$32  
**\$25.99**

**Isa Knox Anew Solaire  
Active Face & Body  
Protection Lotion  
Broad Spectrum  
SPF 50**  
2.7 fl. oz. 154-948  
reg. \$38  
**\$29.99**

**Isa Knox Anew Solaire Everyday  
Mineral Face Protection Cream  
Broad Spectrum SPF 50**  
Lightweight formula with zinc oxide.  
Suitable for sensitive skin. Water-  
resistant (40 minutes). 1.7 fl. oz.  
911-467 reg. \$32  
**\$25.99**



**BROAD-SPECTRUM  
SUN PROTECTION**

**LEAVES NO  
VISIBLE  
WHITE CAST**

**PLUS...**

**HYALURONIC ACID**  
helps skin feel  
plump and supple

**CERAMIDES**  
help protect the  
skin barrier

**CENTELLA ASIATICA**  
helps hydrate  
and soothe skin

**Beyond Glow Sun Milk SPF 50**  
With higher SPF. Blends  
seamlessly. Perfect for all skin  
tones. Formulated without  
fragrance. 1.7 fl. oz. **929-541**  
reg. \$38  
**\$29.99**

**Beyond Glow Sun Moisturizer  
SPF 30**  
For face and body. Blends  
seamlessly. Perfect for all skin  
tones. Formulated without  
fragrance. 1.7 fl. oz.  
**927-773** reg. \$38  
**\$29.99**



# sun care

*that doubles as skin care*

NEW BEYOND GLOW SUNSCREENS



**SPF 50:**  
rich milky  
texture for  
extra care



**SPF 30:**  
lightweight  
texture for  
everyday wear

Best of  
K-Beauty



# in one use

relieves the look of redness  
caused by dryness<sup>†</sup>

Best of  
K-Beauty

## Beyond Glow Centella Redness Relief Serum

A soothing gel serum with centella  
asiatica, panthenol and glycerin to help  
relieve the appearance of redness. 1 fl. oz.  
350-399 reg. \$34

**\$25.99**



BEFORE\*



AFTER

\*Subject's face exposed to  
heat for 20 minutes to induce  
skin irritation.

†Based on a consumer-perception  
study of 32 people.

\*\*Based on a consumer-perception  
study of 31 people.

††Based on a clinical study  
of 32 people.

# BEYOND GLOW

## CENTELLA COLLECTION

**AVON**  
**BEYOND GLOW**  
CENTELLA COOLING TONER  
TONIFIANT RA Fraîchissant  
CENTELLA  
FOR SENSITIVE SKIN  
POUR PEAU SENSIBLE  
200 mL / 6.7 fl. oz. U.S.

**AVON**  
**BEYOND GLOW**  
CENTELLA SOOTHING CREAM  
CRÈME APAISANTE  
CENTELLA  
MOISTURIZES AND REDUCES  
LOOK OF REDNESS CAUSED BY  
DRYNESS. HYPALLERGENIC AND  
NONCOMEDOGENIC.  
FOR SENSITIVE SKIN  
POUR PEAU SENSIBLE  
80 mL / 2.7 fl. oz. U.S.

**96%**  
said skin  
feels  
instantly  
cooled\*\*

**Beyond Glow Centella Cooling Toner**  
Refreshes and  
moisturizes irritated  
skin caused by  
dryness in seconds.  
6.7 fl. oz.  
350-403 reg. \$25  
**\$19.99**

**in 6 days**  
skin barrier improved\*\*

**Beyond Glow Centella Soothing Cream**  
Moisturizes and reduces the  
look of redness caused by  
dryness. Hypoallergenic and  
noncomedogenic.  
2.7 fl. oz. 350-422  
reg. \$34  
**\$25.99**

## Nourish

**Beyond Glow  
Lipcerin Intensive  
Nourishing  
Lip Care**  
reg. \$25  
**\$17.99**



Nourishing  
052-325

An intensive, glistening formula that nourishes dry lips with moisture. With a plumping peptide, moisture-enhancing glycerin and smoothing shea butter. Clear finish. .5 fl. oz.

## Plump

**Beyond Glow  
Lipcerin Plump  
and Cool Lip  
Care**  
reg. \$25  
**\$17.99**



Plump and Cool  
052-344

An intensely moisturizing, glistening formula that visibly plumps and softens lips. With cooling menthol for an instant visible increase in lip volume. Clear finish. .5 fl. oz.

## Tint

**Beyond Glow  
Lipcerin  
Hydrating Tinted  
Lip Care**  
reg. \$25  
**\$17.99**



Twinkle  
052-750



Flash  
052-909



Gleam  
053-097



Flare  
053-101



Splendor  
053-078



Smolder  
053-140

An intensely moisturizing, glistening formula that visibly softens lips and adds a glossy hint of color. With a plumping peptide, moisture-enhancing glycerin and smoothing shea butter. .5 fl. oz.

# shifting shades magic results

Presto change-o! Formula interacts with your lips' pH and transforms to your personalized shade of pink.



## NEW

**Beyond Glow  
Lipcerin Color  
Shift**

**Tinted Lip Care**

A glistening formula that nourishes dry lips and adapts to your lips for a customized shade. Each, .5 fl. oz. reg. \$25

**\$17.99**



**Day Shift**

Lemon/lime shade shifts to a **warm pink** on lips.  
**840-756**



**Night Shift**

Black shade shifts to a **cool pink** on lips.  
**840-760**



96%

Said skin  
feels  
smooth\*

# Cleansers with benefits

fruit-infused cleansers

For All Skin Types

With Kiwi Extract, Vitamins  
B3, B9 and Provitamin B5

**Beyond Glow Gentle Foaming Cleanser  
with Vitamins and Kiwi**

A gentle foaming water-based cleanser that easily washes off makeup and residue without stripping your skin, leaving it feeling soft and smooth. Skin looks brighter and revitalized. 5 fl. oz. **575-760** reg. \$19

**\$14.99**

For All Skin Types

With Mango Butter  
& Papaya Enzyme

**Beyond Glow Melting Balm Cleanser  
with Enzyme and Mango Butter**

Transforms into a silky oil when massaged onto skin. Add water for a creamy cleansing milk that rinses away makeup, residue and even visible blackheads and whiteheads, leaving your skin feeling soft, smooth and refreshed. 5 fl. oz. **575-865** reg. \$19

**\$14.99**

\*Based on a consumer-perception study of 33 people.



100%

Said it  
thoroughly  
melts  
away  
makeup\*

Cleanse +  
Hydrate

For Dry Skin  
With Hyaluronic  
Acid & Niacinamide

**Beyond Glow  
Hyaluronic Acid +  
Niacinamide  
Facial Cleanser**  
5 fl. oz. **627-821**  
reg. \$15

**\$11.99**



Cleanse +  
Brighten

For Normal Skin  
With Vitamin C  
& AHA

**Beyond Glow  
Vitamin C + AHA  
Facial Cleanser**  
5 fl. oz.  
**628-450**  
reg. \$15

**NOW \$8.49**



Cleanse +  
Exfoliate

For Oily Skin  
With Salicylic  
& Citric Acids

**Beyond Glow  
Salicylic +  
Citric Acids  
Facial Cleanser**  
5 fl. oz. **627-798**  
reg. \$15

**NOW \$8.49**




---

## Beyond Glow Niacinamide 2% Cream Mist

---

Deliver an instant boost of hydration to your skin with this creamy, fast-absorbing spray-on serum that can be used under or over makeup for glowing skin anytime, anywhere. Infused with niacinamide.

3.3 fl. oz. **617-365** reg. \$34

**\$25.99**




---

## Beyond Glow Niacinamide 10% Neck Firming Cream

---

Nighttime hydrating neck and chest cream formulated with tried-and-true ingredients niacinamide, shea butter and squalane derived from olive oil, plus panthenol, which helps strengthen the skin barrier. Contains retinol. 3.3 fl. oz. **052-249** reg. \$38

**\$29.99**




---

## Beyond Glow Niacinamide 10% Eye Cream

---

Nighttime moisturizing eye cream formulated with tried-and-true ingredients niacinamide and caffeine, plus panthenol, which helps strengthen the skin barrier. Contains retinol.

1 fl. oz. **052-272** reg. \$30

**\$22.99**



## In just 4 weeks:

### Beyond Glow Niacinamide 10% Neck Firming Cream

- Crepey skin appears smoothed\*
- Neck and décolleté lines look improved\*

\*Based on a clinical study on 31 people.

### Beyond Glow Niacinamide 10% Eye Cream

- Crow's-feet appear reduced†
- Helps under-eye bags look depuffed†

†Based on a clinical study on 30 people.

# Minimize the look of PORES



serum + cream  
together

**3X**

Reduction in the  
look of pores\*\*

## Beyond Glow

### Niacinamide 10% + Panthenol Serum

Helps improve even tone and elasticity. Niacinamide, also known as vitamin B3, helps even skin tone and replenish the skin barrier. Panthenol, also known as provitamin B5, helps lock in moisture. 1 fl. oz.

255-612 reg. \$38

**\$29.99**

## Beyond Glow

### Niacinamide 10% All-in-One Cream

Nighttime facial cream that helps enhance your healthy-looking glow. All-in-one facial cream that visibly brightens skin, reduces fine lines and helps support the skin barrier. Contains retinol. 3.7 fl. oz.

617-350 reg. \$38

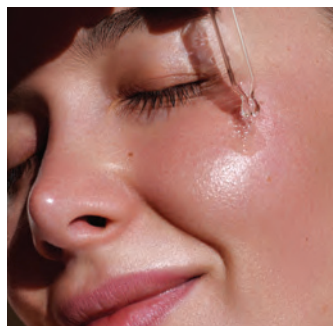
**\$29.99**

Serum + cream, when used together:  
Reduce the look of pores by

**44%<sup>++</sup>**

\*\*Versus using the serum alone, based on a clinical study.

++In a 4-week clinical trial of 32 people.







### Beyond Glow Hyaluronic Acid 1.5% + Ferulic Acid Serum

Hyaluronic acid, known as a “moisture magnet,” helps infuse skin with instant and lasting hydration. Ferulic acid, a powerful antioxidant, helps defend skin from environmental stressors. 1 fl. oz. **255-593** reg. \$38

**NOW \$22.49**



### Beyond Glow Vitamin C 6% + Ferulic Acid Serum

Vitamin C visibly improves radiance for glowing skin. Ferulic acid, a powerful antioxidant, helps protect skin from environmental stressors. 1 fl. oz. **255-589** reg. \$38

**\$29.99**

## Clinically tested to improve skin radiance in 3 days



What makes Beyond Glow  
Vitamin C serum so special?



125-hour antioxidant effect\*



4X stronger skin barrier in 2 weeks†

Just look at the **antioxidant effect!**  
of Beyond Glow Vitamin C 6% + Ferulic Acid Serum

With  
Beyond  
Glow  
Serum



After 30 mins



Without  
Beyond  
Glow  
Serum



## Boosts absorption of vitamin C by **2X**\*\*

Use with  
Vitamin C  
6% + Ferulic  
Acid Serum  
for optimal  
results.

### Beyond Glow Galvanic Booster Device

Give your skin a spa treatment at home in three minutes. Red LED light helps tone the appearance of skin texture, enhances your radiant glow and visibly promotes skin health. On-the-go compact design. Automatically turns on and off. Uses two cell batteries (included). **255-627** reg. \$60

**\$49.99**

\*Evaluated by in vitro test. †Based on stripped skin instrumental study on 31 people. \*\*Evaluated by Dongduk Women's University Industry-Academia Cooperation [ex vivo test, DPPH, Oct. 13 to 24, 2023].

# The Trending Star Ingredient: SNAIL MUCIN Complex

Clinically tested to  
improve skin tone  
and brightness

## Beyond Glow Snail Mucin Complex + Panthenol Cream

Moisturizes while it visibly improves texture and elasticity. With snail mucin complex and panthenol, which helps lock in moisture. 3.7 fl. oz. **255-536** reg. \$36

**\$27.99**

## Beyond Glow Snail Mucin Complex + Niacinamide Serum

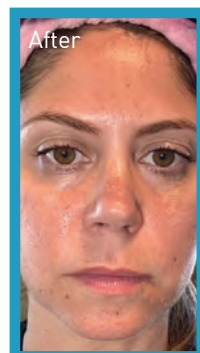
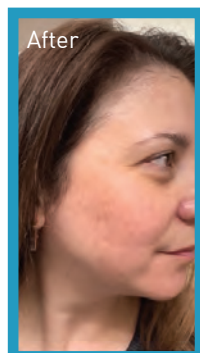
Visibly brightens, moisturizes and retexturizes. With snail mucin complex and niacinamide, also known as vitamin B3, which helps even skin tone and strengthen the skin barrier. 3.3 fl. oz. **255-574** reg. \$36

**\$27.99**

Our cream and serum, formulated with snail mucin complex, moisturize and help visibly brighten skin with a clear, cushiony yet fast-absorbing texture that disappears into the skin while plumping it up with hydration.



## Real Formulas, Real Results



"I'M GETTING SO MANY COMPLIMENTS ON MY BARE SKIN.  
I ALMOST DON'T WANT TO EVEN WEAR MAKEUP!"

"BEYOND GLOW IS A GAME CHANGER.  
I HAVE SEEN A SIGNIFICANT IMPROVEMENT IN MY SKIN."

The Ambassadors were gifted with the Beyond Glow Snail Mucin Cream, plus the four serums from the Beyond Glow regimen (pages 45-47), which they used with the Galvanic Booster Device, AM and PM, for two weeks.

in 7 days, see a  
dramatic difference:

it lifts. it firms.  
it tightens.  
all in one.



**Isa Knox Anew Clinical  
Collagen Booster  
Eye Lift Pro Dual Eye System**  
With a peptide complex to help  
boost skin renewal.  
Gel, .33 fl. oz.  
Cream, .33 fl. oz.  
**564-550 reg. \$40**  
**\$24.99**



## WITH PLUMPING PEPTIDES

Peptides jump-start skin renewal to help visibly **firm** skin, boost **elasticity** and restore **youthful bounce**.

### Isa Knox Anew Clinical Collagen Booster Firming Cream

With moisturizing and skin-plumping niacinamide and squalane. Hygienic, airless pump. 1.7 fl. oz.

069-327 reg. \$45

**\$29.99**



### Isa Knox Anew Clinical Collagen Booster Rejuvenating Serum Ampoules

Powerful peptide blend boosts skin renewal. 60 capsulated single-use ampoules.

.008 fl. oz. each.

803-077 reg. \$66

**\$54.99**



### Isa Knox Anew Clinical Collagen Booster Microneedling Polisher

At-home alternative to micro-dermabrasion and micro-needling. Visibly diminishes pores, fine lines and wrinkles.

1.7 fl. oz. 798-592

reg. \$34

**\$20.99**

**9 OUT OF 10 WOMEN**  
showed improvement in  
the look of wrinkles...and  
it moisturizes, too.



**Isa Knox Anew Clinical  
Revitalize & Reveal  
Advanced Wrinkle Corrector**  
In just two weeks, wrinkles appear  
reduced. 1.7 fl. oz. **470-100**  
reg. \$40  
**\$29.99**



**Isa Knox Anew Clinical  
Revitalize & Reveal Intensive Peel**  
Intensive resurfacing peel similar to  
pro acid peels. With AHA and PHA.  
1 fl. oz. **780-025** reg. \$45  
**\$29.99**



**Isa Knox Anew Clinical Revitalize & Reveal  
Resurfacing Expert Smoothing Fluid**  
79% as effective as a pro micro-dermabrasion  
without the same irritation. 1 fl. oz.  
**852-282** reg. \$44  
**\$31.99**



**Isa Knox Anew Clinical  
Revitalize & Reveal Resurfacing Lotion for Body**  
Exfoliates with gentle yet effective AHA lactic  
acid. Moisturizes with shea butter.  
5 fl. oz. **390-785** reg. \$34  
**\$20.99**



**Isa Knox Anew Clinical  
Revitalize & Reveal  
Extra Strength Retexturizing Peel**  
Results similar to a 35% pro glycolic peel.\*  
30 fragrance-free pads. 2" diam. **632-774** reg. \$40  
**\$29.99**

\*In 6 out of  
8 attributes  
tested over a  
7-week period.

see more  
youthful skin

Dermatologists recommend  
retinol as the #1 wrinkle fighter



**Isa Knox Anew  
Clinical Line Eraser with Retinol  
Targeted Treatment**

For targeted lines and wrinkles  
(expression lines) such as around  
forehead and mouth. .67 fl. oz.

925-159 reg. \$40

**\$29.99**



**Isa Knox Anew Clinical  
Line Eraser  
with Retinol Treatment**  
Great for first-time retinol users.  
Use AM/PM. 1 oz. net wt.

763-330 reg. \$45

**\$31.99**



**Isa Knox Anew Clinical  
Line Eraser with Retinol [1.0%]  
Advanced Retinol Serum**

Our highest dose of retinol.  
Dramatically reduces the  
appearance of fine lines, wrinkles  
and dark spots. Use PM. 1 fl. oz.

390-751 reg. \$50

**\$40.99**





### **Anew Ultimate Supreme Radiant Firming Cream**

A lightweight moisturizer perfect for daytime use. With panthenol, niacinamide and peptides to help boost hydration, visibly restore brightness and firm skin contours. With bakuchiol, an alternative to retinol, to visibly reduce wrinkles and discolorations without irritation. Clinically tested to improve skin texture and elasticity.

1.7 fl. oz. **835-052** reg. \$60

**\$41.99**



### **Anew Ultimate Night Repair Serum**

See improved tone and texture. With peptides, licorice, hyaluronic acid and niacinamide.

Use PM before moisturizer.

1 fl. oz. **625-355** reg. \$45

**\$30.99**



### **Anew Ultimate Supreme Eye Balm**

Moisturizing formula infused with squalane, sunflower seed oil and antioxidant vitamin E. Wear alone or under makeup.

0.1 oz. net wt. **625-340** reg. \$45

**\$30.99**



### **Anew Ultimate Supreme Dual Elixir**

With Black Pearl Extract and precious oils. See a dramatic difference in even advanced signs of aging. Serum/Oil, .67 fl. oz. each.

**963-925** reg. \$60

**\$41.99**



### **Anew Ultimate Supreme Advanced Performance Crème**

With Black Pearl Extract. See a dramatic difference in deep wrinkles and skin radiance.

1.7 oz. net wt. **014-735** reg. \$60

**\$41.99**



#### **Anew Ultimate Multi-Performance Eye System**

Visibly smooths crow's-feet and de-puffs under-eye bags. Cream, .5 oz. net wt. Elixir, .09 oz. net wt. **021-862** reg. \$42

**\$29.99**



#### **Anew Ultimate Multi-Performance Night Cream**

It works while you sleep to revive and recreate the look of youthful skin. 1.7 oz. net wt.

**763-311** reg. \$42

**\$29.99**



#### **Anew Ultimate Multi-Performance Day Cream Broad Spectrum SPF 25**

See wrinkles fade and youthful vibrance return. 1.7 oz. net wt. **763-307** reg. \$42

**\$29.99**

defying gravity  
has never been easier



**Anew Platinum  
Firm and Sculpt Cream  
for Neck and Chest**

With Peptide Lifting Complex to treat the skin on your neck and chest, which is more vulnerable to wrinkles and sagging. Use PM after cleansing. 1.7 oz. net wt. **763-584** reg. \$42

**\$29.99**

**Anew Platinum  
Night Cream**

Skin appears smoother overnight, resculpted over time. 1.7 oz. net wt.

**753-439**  
reg. \$42

**\$29.99**

**Anew Platinum  
Eye & Lip Cream**

Dual applicator.

.5 oz. net wt. **902-614**  
reg. \$42

**\$29.99**

**Anew Platinum  
Day Cream**

**Broad Spectrum SPF 25**  
With Paxillium Technology to help defy gravity and Radiant Microspheres to help visibly restore radiance. 1.7 oz. net wt.

**184-146** reg. \$42

**\$29.99**





#### **Anew Platinum Age Delay Serum**

With niacinamide, panthenol and peptides.

Formulated to visibly boost elasticity for a firmer look. Use AM and PM before moisturizer.

1 fl. oz. **625-609** reg. \$45

**\$30.99**



#### **Anew Platinum Sculpting Sleep Mask**

An overnight mask that helps visibly lift, plump and nourish skin while you sleep. Formulated with skin-contouring ingredients, including tetrapeptide, panthenol, niacinamide and yeast extract. Clinically tested to improve skin texture and wrinkles in two weeks. 1.7 fl. oz. **835-033** reg. \$42

**\$29.99**



#### **Anew Platinum Sculpting Body Serum**

With moisture-boosting niacinamide, panthenol (provitamin B5) and peptides.

6.7 fl. oz. **506-249**

reg. \$45

**\$30.99**



**Anew Hydra Fusion  
De-Puffing  
Eye Serum**

With caffeine and hyaluronic acid. Cooling ceramic tip. Instantly boosts hydration around eye area by 3X. .5 fl. oz. **137-737** reg. \$34

**\$22.99**

**Anew Hydra Fusion  
1.5% Hyaluronic  
Acid Serum**

With three different molecular sizes of HA that reach multiple layers of skin's surface to visibly plump skin. 1 fl. oz. **290-390** reg. \$44

**\$25.99**

**Anew Hydra Fusion  
Cleansing  
Micellar Water**

No need to rinse off. 10.1 fl. oz.

**139-380** reg. \$14

**\$9.99**

**Anew Hydra Fusion  
Nighttime Facial  
Treatment**

Hyaluronic acid. Shea butter beads. Visibly re-plumps skin with 3X more moisture. Relaxing rose scent. 1.7 oz. net wt. **139-429** reg. \$34

**NOW \$16.99**

**Anew Hydra Fusion  
Gel Cream**

72 hours of long-lasting hydration. 1.7 oz. net wt.

**266-893** reg. \$34

**\$22.99**

**100%** agree:

skin looks  
smoother  
and softer\*

\*Based on a consumer-  
perception study.



For dry, irritated skin

**moisturizing bomb toner**

A fast-absorbing, milky-textured toner clinically tested to increase skin's moisture levels in arid, dry conditions. 6.7 fl. oz. **929-207** reg. \$33

**\$30**

For dryness, loss  
of elasticity and  
firmness



**moisturizing eye bomb**

Lightweight, refreshing eye cream cools on contact. Helps keep eye area looking firm, resilient and smooth. .84 fl. oz. **021-915** reg. \$53

**\$48**

For dryness,  
dullness and  
uneven texture



**The True Cream - Aqua Bomb**

70% increase in hydration levels.\* 1.69 fl. oz.

**556-207** reg. \$42

**\$38**

\*Based on a clinical study.

For an extra boost  
of hydration



**aqua bomb hydrating toner**

Water-based. With hyaluronic acid, honeysuckle flower extract and baobab tree seed extract. Use after cleansing, before serum and moisturizer. 6.7 fl. oz. **106-648** reg. \$33

**\$30**

For dryness, loss  
of elasticity and  
firmness



**The True Cream - Moisturizing Bomb**

26 hours of long-lasting moisture.\* 1.69 fl. oz.

**079-252** reg. \$42

**\$38**

\*Based on a clinical study.

For dryness,  
dullness and  
uneven texture



**aqua bomb jelly cleanser**

Jelly to foam. Amino acids and glycerin-based cleansing agents gently cleanse. 5.4 fl. oz. **445-353** reg. \$35

**\$30**

For dull, dry,  
fatigued skin



**aqua bomb sleeping mask**

Unique jelly-pudding texture! Replenishes with explosive hydration for smoother skin and a healthy glow. 2.53 oz. net wt. **514-717** reg. \$42

**\$38**





**NORMAL TO DRY SKIN**

**Isa Knox LXNEW Clean  
Nourishing Cream Cleanser**

Removes impurities and makeup while restoring moisture. 5 fl. oz. **717-990** reg. \$15

**\$11.99**



**OILY TO NORMAL SKIN**

**Isa Knox LXNEW Clean  
Soothing Whipped Oil Cleanser**

Helps eliminate impurities and excess oil. 5 fl. oz. **718-025** reg. \$19

**\$14.99**



**NORMAL, DRY AND  
COMBINATION SKIN**

**Isa Knox LXNEW  
Clean Balancing Gel Cleanser**

Gel to foam. Helps remove oil and impurities while rebalancing skin. 5 fl. oz. **718-010** reg. \$15

**\$11.99**



**NORMAL, DRY,  
COMBINATION, OILY SKIN**

**Isa Knox LXNEW Clean 2-in-1  
Exfoliating Cleansing Balm**

Melts away makeup and impurities. Spatula included. 3.5 oz. net wt. **718-006** reg. \$32

**NOW \$19.49**

**Avon Solutions Banishing Serum**

An intensive serum with ingredients known to help improve the appearance of dark spots and uneven skin tone. 1 fl. oz. **507-905** reg. \$18

**\$13.99**

**Avon Solutions****Dramatic Firming Serum**

This moisturizing serum contains effective anti-aging ingredients that help promote a more youthful appearance. 1 fl. oz. **507-871** reg. \$18

**\$13.99**

**Avon Solutions Nurtura Serum**

With skin-nourishing ingredients known to help combat dryness and flakiness, and help hydrate. 1 fl. oz. **507-924** reg. \$18

**\$13.99**

**Solutions  
Dramatic Firming  
Cream**

Skin looks and feels smoother. 1.7 fl. oz.

**374-657**  
reg. \$14

**\$10.99**

**Solutions  
Nurtura  
Replenishing  
Cream**

Adds moisture to dry skin. 1.7 fl. oz.

**908-263**  
reg. \$14

**\$10.99**

**Solutions  
Banishing Cream  
Skin Discoloration  
Improver**

Visibly improves skin tone. 1.7 fl. oz.

**267-115**  
reg. \$14

**\$10.99**

**Solutions  
Anti-Aging Cream**

Moisturizing formula works to visibly smooth the appearance of fine lines and wrinkles. 1.7 fl. oz. **949-460** reg. \$14

**\$10.99**



**Rice Water Bright  
Rice Bran  
Gentle Exfoliating  
Cleanser**  
Daily scrub with  
organic rice bran  
powder, rice bran oil  
and hydrated silica.  
10.1 fl. oz. **376-865**  
reg. \$19  
**\$14.99**



**Rice Water Bright  
Facial Cleansing  
Lotion**  
Helps brighten skin.  
Gently removes  
makeup and  
impurities.  
6.7 fl. oz. **720-184**  
reg. \$14  
**\$10.99**



**Rice Water Bright  
Foaming Cleanser**  
Light whipped foam.  
With rice water and  
soapwort extract.  
Skin looks clear  
and bright.  
10.1 fl. oz. **508-093**  
reg. \$19  
**\$14.99**



**Rice Water Bright  
Mild Cleansing  
Water**  
Removes impurities  
via the micellar  
method, so no need  
to rinse off!  
16.9 fl. oz. **288-360**  
reg. \$18  
**\$13.99**



**Smaller Size!  
Rice Water Bright  
Foaming Cleanser**  
Light whipped foam.  
With rice water and  
soapwort extract.  
Convenient size for  
your medicine cabinet.  
5 fl. oz. **478-479**  
reg. \$13  
**\$9.99**



**Rice Water Bright  
Light Facial  
Cleansing Oil**  
With jojoba oil  
and rice water  
extract, known to  
visibly brighten and  
moisturize skin.  
5 fl. oz. **720-199**  
reg. \$20  
**\$15.99**



**Rice Water Bright  
Cleansing  
Facial Wipes**  
Great on the go.  
With rice extract to  
moisturize while  
cleansing. Removes  
eye makeup.  
50 sheets. **508-108**  
reg. \$13  
**\$9.99**



**Rice Water Bright  
Facial Massage  
Cream**  
With rice water,  
vitamins A, B  
and E, ceramide  
and minerals. After  
cleansing, massage  
into skin 2-3 times  
a week. 6.7 fl. oz.  
**450-200** reg. \$25  
**\$19.99**



Best of  
K-Beauty



**Calendula Essential Moisture**  
Daily skin care for irritated and sensitive skin. With moisturizing calendula extract, a soothing herb complex, and the ultimate hydrator, hyaluronic acid.

**A. Serum**  
A moisturizing and soothing serum that helps calm skin and enhance hydration. 1.35 fl. oz. **746-263** reg. \$15  
**NOW \$8.99**



**B. Eye Cream**  
A lightweight, non-greasy, moisturizing and soothing eye cream. .67 fl. oz. **966-245** reg. \$14  
**NOW \$7.99**



**C. Cream**  
A moisturizing cream that instantly hydrates while it gently helps soothe dry, itchy, irritated skin. 1.69 fl. oz. **966-101** reg. \$15  
**NOW \$8.99**



scents to last

**Far Away  
Perfumed Skin Softener**



**free**

WITH ANY  
FAR AWAY BRAND  
EAU DE PARFUM PURCHASES,  
PAGES 64–65. \$7 VALUE  
Limited quantities.  
Sold separately on page 81.

**Haiku  
Perfumed Skin Softener**



**free**

WITH ANY  
HAIKU BRAND EAU DE PARFUM  
PURCHASES,  
PAGES 66–67. \$7 VALUE  
Limited quantities.  
Sold separately on page 81.

**Imari  
Perfumed Skin Softener**



**free**

WITH ANY  
IMARI BRAND EAU DE PARFUM  
OR TOILETTE PURCHASES,  
PAGE 68. \$7 VALUE  
Limited quantities.  
Sold separately on page 81.





fruity floral

**Far Away Bali Eau de Parfum**  
Grapefruit, salted tuberose and amber.  
1.7 fl. oz. **451-389**  
reg. \$30  
~~\$22.99~~ **\$12.49**



amber floral

**Far Away Eau de Parfum**  
Freesia, jasmine and amber.  
1.7 fl. oz. **685-712**  
reg. \$30  
~~\$22.99~~ **\$16.99**



fruity floral

**Far Away Infinity Eau de Parfum**  
Bergamot, jasmine sambac and sandalwood.  
1.7 fl. oz. **888-301** reg. \$30  
~~\$22.99~~ **\$16.99**



soft amber

**Far Away Gold Eau de Parfum**  
Ylang-ylang, jasmine and vanilla.  
1.7 fl. oz. **888-297** reg. \$30  
~~\$22.99~~ **\$16.99**

amber floral

**Far Away Moroccan Nights**  
**Eau de Parfum**

Spicy floral notes dance in  
a Moroccan dream. 1.7 fl. oz.  
612-655 reg. \$30

**\$22.99 \$16.99**

Top: Violet Leaf, Powdery  
Orris, Heliotrope  
Mid: Blooming Moroccan  
Mimosa, White Tonka,  
Cardamom, Orange Flower  
Base: Creamy Cashmere  
Woods, Musk, Sandalwood



# The Allure Of Moroccan Nights

**AN EXTRA 25% OFF**

Final prices as shown.



woody floral

**Haiku Sunrise Eau de Parfum**

Coconut water, rhubarb  
and cedarwood.

1.7 fl. oz. **091-500**  
reg. \$30

**\$22.99 \$16.99**



fresh green

**Haiku Kyoto Flower Eau de Parfum**

Violet leaf, white peony and cotton musk.

1.7 fl. oz. **144-352**  
reg. \$30

**\$22.99 \$16.99**



fresh green

**Haiku Reflection Eau de Parfum**

Water accord, acacia blossom and amber wood.

1.7 fl. oz. **617-657**  
reg. \$30

**\$22.99 \$16.99**



serene. divine.  
elegant.



**fresh green**

**Haiku**  
**Eau de Parfum**  
1.7 fl. oz. **521-170**  
reg. \$30

**~~\$22.99~~ \$16.99**

**Top:** Japanese Yuzu,  
Sweet Pomegranate,  
Summer Pear  
**Mid:** Muguet, Freesia,  
Tuberose  
**Dry:** Blonde Woods,  
Soft Musks, Vetiver

**AN EXTRA 25% OFF**

Final prices as shown.



woody floral

**Imari Amor Eau de Parfum**

Black currant, orris and warm musk.

1.7 fl. oz. **762-573** reg. \$30

~~\$22.99~~ **\$16.99**



amber floral

**Imari Seduction Eau de Toilette**

Wild berries, purple orchid and patchouli.

1.7 fl. oz. **452-897** reg. \$30

~~\$22.99~~ **\$16.99**

embrace your desire

soft amber

**Imari Eau de Toilette**

Bergamot, jasmine and  
amber. 1.7 fl. oz. **047-038**

reg. \$30

~~\$22.99~~ **\$16.99**







soft amber

**Rare Gold Eau de Parfum**  
Mandarin zest, ylang-ylang  
and amber. 1.7 fl. oz.

933-115 reg. \$32

~~\$24.99~~ **\$18.49**



soft floral

**Rare Pearls Eau de Parfum**  
Magnolia, white pepper and rosewood.  
1.7 fl. oz. 761-615 reg. \$32

~~\$24.99~~ **\$18.49**



fruity floral

**Rare Amethyst Eau de Parfum**  
Plum, violet and sandalwood.  
1.7 fl. oz. 933-062 reg. \$32

~~\$24.99~~ **\$18.49**

**AN EXTRA 25% OFF**

Final prices as shown.

\*Free offer excludes page 69.

C18 | 69



# IT'S YOUR LIFE, OWN IT.

Express yourself with an exciting, affirmative statement of pure confidence, fierce independence and vibrant energy.



amber floral

## Live Out Loud U Be U

Top: Nectarine, Cardamom, Marshmallow  
Mid: Sweet Fig, Coconut Praline, Jasmine  
Base: Whipped Vanilla, Creamy Woods, Musk

**Body Cream 048-000**

**Body Mist 047-114**

fruity floral

## Live Out Loud Retro Sun

Top: Guava, Tropical Mango, Tangerine  
Mid: Plumeria, Orange Flower, Creamy Coconut  
Base: Rich Amber, Moss, Cedarwood

**Body Cream 047-300**

**Body Mist 047-076**

fruity floral

## Live Out Loud Guilt Free

Top: Bergamot, Plum, Pink Dragon Fruit  
Mid: Muguet, Rose, Violet Leaf  
Base: Sandalwood, Vanilla, Creamy Musk

**Body Cream 047-320**

**Body Mist 047-100**



**NEW****Live Out Loud  
Body Cream**

Fluffy, whipped cream with hyaluronic acid moisturizes and nourishes, leaving skin soft, glowing and beautifully scented. Each, 5 fl. oz. reg. \$21

**\$15.99 each**

**NEW****Live Out Loud  
Body Mist**

Lightweight, refreshing mist absorbs quickly and leaves skin feeling soft, supple and beautifully scented. Each, 3.4 fl. oz. reg. \$22

**\$16.99 each**







fruity floral

**Live Out Loud #4U**  
**Eau de Parfum**  
 Mandarin, peach blossom  
 and vanilla. 1.7 fl. oz.  
**735-968** reg. \$40  
**\$30**



fruity floral

**Live Out Loud**  
**Eau de Parfum**  
 Strawberry, mimosa and  
 vanilla. 1.7 fl. oz. **142-000**  
 reg. \$40  
**NOW \$22.49**



fruity floral

**Live Out Loud Solar Vibes**  
**Eau de Parfum**  
 Bergamot, coconut water and  
 fluffy marshmallow. 1.7 fl. oz.  
**835-822** reg. \$40  
**\$30**

love begins with you



soft floral

**Today Eau de Parfum**  
 Magnolia blossoms, hibiscus petals  
 and silk musk. 1.7 fl. oz. **490-855**  
 reg. \$40  
**\$30**



Best of  
K-Beauty

every  
**MOMENT**  
tells a story



soft amber

**Avon Moments****Out On A Limb**

Spicy cardamom, honeyed mimosa flower and powdery vanilla.

**Eau de Toilette 196-112**

1.7 fl. oz. reg. \$36

**\$27.99****Body Wash 196-442**

7.7 fl. oz. reg. \$19

**\$14.99****Out On A Limb Set 007-718**

amber floral

**Avon Moments****Remember That Night**

Sparkling grapefruit, opulent jasmine and amber.

**Eau de Toilette 196-662**

1.7 fl. oz. reg. \$36

**\$27.99****Body Wash 196-768**

7.7 fl. oz. reg. \$19

**\$14.99****Remember That Night Set 008-020**

fruity floral

**Avon Moments Day Dreamer**

Quince, dewy iris and cedarwood.

**Eau de Toilette 196-772**

1.7 fl. oz. reg. \$36

**\$27.99****Body Wash 196-844**

7.7 fl. oz. reg. \$19

**\$14.99****Day Dreamer Set 008-236****BOTH FOR \$30.49**same scent  
page 73. **\$55 VALUE**

lush &  
invigorating



fresh green

**LYRD Pear Blossom & Bamboo**  
**Eau de Parfum**

Lemon zest, dewy bamboo, sweet pear blossom.  
1.7 fl. oz. **763-804** reg. \$45

**\$35**



**LYRD Peony Rosé**  
**Hair and Body Mist\***

Soft floral. Lightweight formula envelops you in a soft cocoon of scent with notes of peony petals, pink currant and sheer musk. Leaves hair with a subtle, healthy-looking shine. 3.25 fl. oz.

**167-212** reg. \$19

**\$14.99**



**LYRD Honeysuckle Blossom**  
**Hair and Body Mist\***

Lightweight formula envelops you in a soft cocoon of scent with notes of apple blossom, honeysuckle nectar and vanilla orchid. Leaves hair with a subtle, healthy-looking shine.

3.25 fl. oz. **167-231** reg. \$19

**\$14.99**



fresh green

**LYRD Honeysuckle Blossom**  
**Eau de Parfum**

Apple blossom, honeysuckle nectar and vanilla orchid. 1.7 fl. oz. **167-270**  
reg. \$34

**\$26**



fresh green

**LYRD Coastal Lotus**  
**Eau de Parfum**

Sparkling mandarin, island gardenia and lotus flower. 1.7 fl. oz.

**869-906** reg. \$42

**\$35**

elegant yet wild

**NEW**

fresh citrus

**LYRD**  
**Clementine &**  
**Poppy**  
**Eau de Parfum**  
1.7 fl. oz. 922-384  
reg. \$45

**\$35**

Top: Fresh Air  
Accord, Blood  
Orange, Clementine,  
Bergamot, Black  
Currant  
Mid: Guava, Poppy  
Flowers, Orange  
Blossom, Jasmine,  
Tuberose  
Base: Cashmere  
Woods, Sheer Musk







**LIMITED EDITION**

❖ **LYRD Some Like It Hot Candle**

Creamy coconut, juicy mandarin and warm vanilla. Gives 30 hours of burn time. 7 oz. net wt. 3 1/8" diam. x 3 1/2" H. Glass jar, soy-blend wax. Assembled in USA.

**746-450**

reg. \$25

**\$19.99**



**LIMITED EDITION**

❖ **LYRD Back From the Beach Candle**

Orange blossom, water lily and musk. Gives 30 hours of burn time. 7 oz. net wt. 3 1/8" diam. x 3 1/2" H. Glass jar, soy-blend wax. Assembled in USA.

**747-035**

reg. \$25

**\$19.99**



**LIMITED EDITION**

❖ **LYRD Surf's Up, Bottoms Up Candle**

Ripe banana, tropical rum and sweet whipped cream. Gives 30 hours of burn time. 7 oz. net wt. 3 1/8" diam. x 3 1/2" H. Glass jar, soy-blend wax. Assembled in USA.

**746-445** reg. \$25

**\$19.99**

Unique wooden wick design gives a clean, even burn.



**LIMITED EDITION**

❖ **LYRD Bonfire Wooden Wick Candle**

Earthy oakmoss, salty beach wood and fiery amber. Gives 28 hours of burn time. 11 oz. net wt. 4 1/4" diam. x 3 1/8" H. Wooden wick, glass jar, soy-blend wax. Assembled in USA.

**765-625** reg. \$25

**\$19.99**

amber floral  
**LYRD Sultry Orchid**  
**Eau de Parfum**  
 Pink saffron, red orchid  
 and warm amber. 1.7 fl. oz.  
 892-960 reg. \$42  
**\$35**



*wildly indulgent. simply sublime.*



**LYRD Sultry Orchid**  
**Travel Spray**  
 .3 fl. oz. 612-799  
 reg. \$19  
**NOW \$10.99**



**LYRD Vanilla Rose**  
**Travel Spray**  
 .3 fl. oz. 505-128  
 reg. \$19  
**\$14.99**



amber floral  
**LYRD Vanilla Rose Eau de Parfum**  
 Dewy roses, comforting vanilla  
 and cedarwood. 1.7 fl. oz.  
 094-020 reg. \$42  
**\$35**

# layering essentials

**Far Away  
Body Scrub  
& Wash**  
6.7 fl. oz.  
143-360  
reg. \$15

**NOW  
\$7.99**



**Far Away  
Hair and Body  
Mist**

3.25 fl. oz.  
572-536  
reg. \$18

**NOW \$10.99**



**Far Away  
Body Lotion**  
6.7 fl. oz.  
082-881  
reg. \$14

**NOW \$6.99**



**Rare Pearls  
Hand Cream**

2.5 fl. oz.  
364-827  
reg. \$9

**\$6.99**



**Far Away  
Hand Cream**

2.5 fl. oz.  
364-850  
reg. \$9

**\$6.99**



**Rare Pearls  
Body Lotion**

6.7 fl. oz.  
082-915  
reg. \$14

**\$10.99**



**Rare Pearls  
Hair and Body  
Mist**

3.25 fl. oz.  
572-851  
reg. \$18

**NOW  
\$10.99**





**Haiku Hair and Body Mist**  
3.25 fl. oz. **572-574**  
reg. \$18  
**NOW \$10.99**



**Haiku Hand Cream**  
2.5 fl. oz. **364-808** reg. \$9  
**\$6.99**



**Haiku Body Lotion**  
6.7 fl. oz. **447-820**  
reg. \$14  
**NOW \$7.99**



**Haiku Body Scrub & Wash**  
6.7 fl. oz.  
**143-208**  
reg. \$15  
**NOW \$7.99**



soft floral

**Avon Classics Soft Musk Cologne**

Peach blossom, blonde woods and sheer musk. 1.7 fl. oz. **787-790**  
reg. \$20

**\$15.99**



soft floral

**Avon Classics Dreamlife Cologne**

Mimosa flower, rose and amber. 1.7 fl. oz. **236-227** reg. \$20

**\$15.99**



woody floral

**Avon Classics Night Magic Cologne**

Neroli, jasmine and musk. 1.7 fl. oz. **439-495** reg. \$20

**\$15.99**



soft floral

**Avon Classics Candid Cologne**

Bergamot, tuberose and patchouli. 1.7 fl. oz. **038-295**  
reg. \$20

**NOW \$9.99**



soft floral

**Avon Classics Odyssey Cologne**

Tuberose, ylang-ylang and oakmoss. 1.7 fl. oz. **900-391**  
reg. \$20

**\$15.99**



soft floral

**Avon Classics Sweet Honesty Cologne**

Lily of the valley, rose and cedarwood. 1.7 fl. oz. **901-861** reg. \$20

**\$15.99**



soft floral

**Avon Classics Timeless Cologne**

Cardamom, jasmine and patchouli. 1.7 fl. oz. **037-930**  
reg. \$20

**\$15.99**



soft floral

**Avon Classics Topaze Cologne**

Jasmine, rose and sheer musk. 1.7 fl. oz. **735-217**  
reg. \$20

**\$15.99**



fresh green

**Free O<sub>2</sub> Eau de Toilette**

White peach tea, honeysuckle and musk. 1.7 fl. oz. **490-840**  
reg. \$20

**\$15.99**

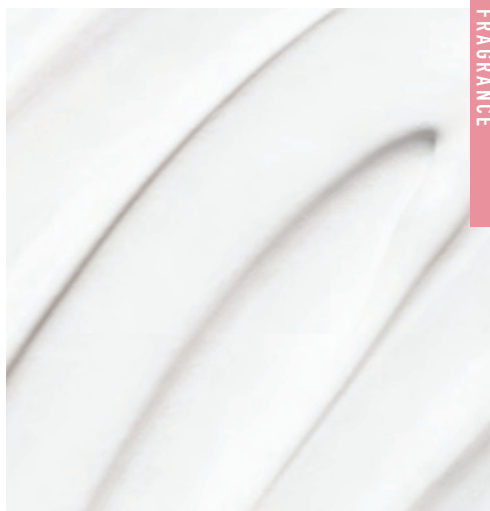
# scented softness

**Perfumed Skin Softener**  
Moisturizing formula leaves skin soft and  
scented. Each, 5 fl. oz. reg. \$7

**\$4.99 each**

Avon Classics Candid 739-160  
Avon Classics Odyssey 739-762  
Imari 738-751  
Haiku 738-694

Avon Classics Timeless 739-155  
Avon Classics Sweet Honesty 740-246  
Avon Classics Night Magic 738-766  
Far Away 049-246





let your senses be your guide



fresh aromatic

**Perceive Cologne**

3.4 fl. oz. 888-062 reg. \$32

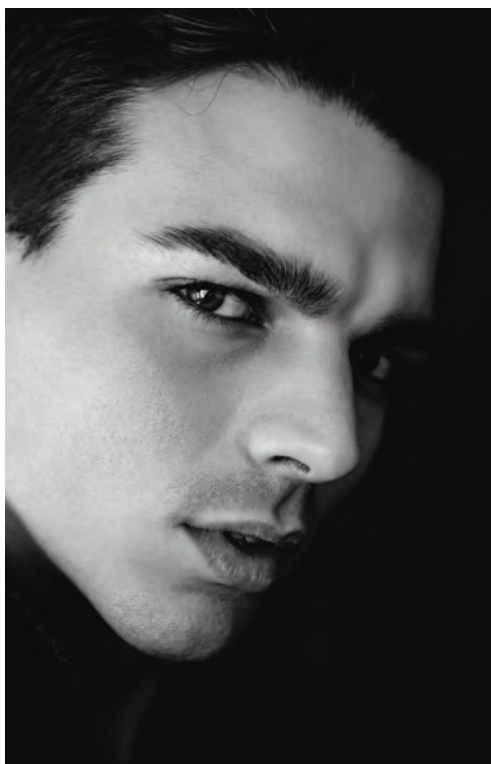
**\$24.99**

Top: Mandarin, Grapefruit, Sparkling Citrus

Mid: Geranium, Earthy Sage, Lavender

Base: Calming Cedarwood, Patchouli, Amber

captivate at a  
single glance



fresh aromatic

**Mesmerize Cologne**

Bergamot, cardamom and amber.

3.4 fl. oz. **871-458** reg. \$32

**\$24.99**

woody

**Mesmerize Black Eau de Toilette**

Pepper, nutmeg and tonka bean.

3.4 fl. oz. **305-667** reg. \$32

**\$24.99**

**FOR \$34.99** mix or match, any two for discount to apply  
pages 82-83.



**Wild Country  
Hair & Body Wash**  
5 fl. oz. 215-188  
reg. \$9  
**\$6.99**



**Wild Country  
Aftershave Splash**  
4 fl. oz. 366-432  
reg. \$16  
**\$12.99**

**fresh aromatic**

**Wild Country Cologne**

Lavender, coriander seed  
and sandalwood. 3 fl. oz.

086-466 reg. \$25

**\$19.99**

Packaging may vary.





# cause a stir



woody

**Black Suede**

**The Blend**

**Eau de Toilette**

Aged rum-soaked  
casks, smoky leather  
and spicy woods.

3.4 fl. oz.

433-865

reg. \$30

**\$22.99**



woody

**Black Suede Eau de Toilette**

Bergamot, leather and oakmoss.

3.4 fl. oz. 908-703 reg. \$25

**\$19.99**



**Black Suede**

**Hair & Body Wash**

5 fl. oz. 230-200

reg. \$9

**\$6.99**





NEW Skin So Soft +  
**Hydro-  
Plenish**  
WITH HYALURONIC ACID

A luxurious collection with  
hyaluronic acid adds extra  
hydration so skin looks  
youthfully plump.





NEW Skin So Soft +

# HydroPlenish

WITH HYALURONIC ACID



## NEW

### Body Lotion

48-hour moisturization. Replenishing body lotion with hyaluronic acid and panthenol to help boost hydration and visibly restore skin's natural glow. Lightly fragranced. 11.8 fl. oz. **764-160** reg. \$26

**\$20.99**

### Shower Gel

With sunflower seed oil and cupuacu butter to soften and smooth while it helps to boost hydration and restore skin's natural glow. Lightly fragranced. 8 fl. oz. **763-967** reg. \$23

**\$17.99**

### Body Scrub

Exfoliating body scrub with sunflower seed oil and cupuacu butter to soften and smooth while it helps to boost hydration and restore skin's natural glow. Lightly fragranced. 8.2 oz. net wt. **763-857** reg. \$25

**\$19.99**

### Bath & Body Oil

48-hour moisturization. With hyaluronic acid, sunflower seed oil and cupuacu butter to boost hydration and help skin look dewy with a natural glow. Lightly fragranced. 11.8 fl. oz. **763-971** reg. \$38

**\$29.99**

Enhanced with squalane, niacinamide and other high-performance ingredients to help boost and lock in hydration so skin appears plumper, softer and smoother with a natural healthy-looking glow.

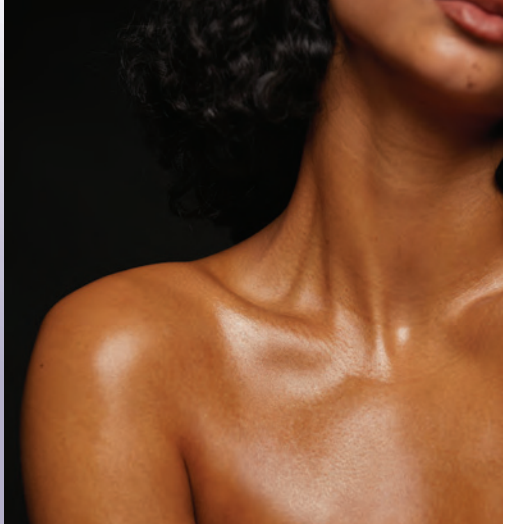




**REFRESH. REVITALIZE.**

*Reveal your radiance.*

With rejuvenating **retinol** to visibly brighten and even skin tone, plus **bisabolol**, a soothing antioxidant known to help skin look firmer.





NEW Skin So Soft +  
**RADIANT  
 RENEW**  
 with retinol



**Bath & Body Oil**

48-hour hydration! With squalane to help boost moisturization. Skin looks smooth with a radiant glow.

Apply during or after a bath or shower. Lightly fragranced. 11.8 fl. oz.

**051-955** reg. \$38

**\$29.99**

**Shower Gel**

Infused with argan oil, an abundant source of fatty acids, antioxidants and vitamin E, to help skin feel softer, smoother and rejuvenated. Lightly fragranced. 8 fl. oz.

**051-458** reg. \$23

**\$17.99**

**Body Lotion**

48-hour moisturization! With intensely hydrating hyaluronic acid.

Skin looks softer, smoother, plumper and more radiant. Lightly fragranced.

11.8 fl. oz.

**051-974**

reg. \$26

**\$20.99**

# THE BEAUTY OF *Jojoba Oil*



## ORIGINAL

### Bath Oil

Fresh herbal scent.  
16.9 fl. oz. **439-040**  
reg. \$25

**\$19.99**

### Replenishing Hand Cream

3.4 fl. oz. **776-633**  
reg. \$8

**NOW \$4.49**

### Beauty Bar Soap

3.17 oz. net wt. **543-110**  
reg. \$5

**\$3.99**

### Body Lotion

48 hours of moisture.  
11.8 fl. oz. **761-634**  
reg. \$17

**\$12.99**

### Bonus-Size

#### Body Lotion

33.8 fl. oz. **825-351**  
reg. \$26

**\$17.99**

### Bonus-Size Shower Gel

Cleanses and hydrates.  
33.8 fl. oz. **433-444**  
reg. \$19

**\$14.99**

### Shower Gel

5 fl. oz. **914-580**  
reg. \$9

**\$5.99**

This plant extract mimics skin's natural oils, with vitamins and minerals essential to keep skin soft and smooth.

**Original Gelled Body Oil**

Dries to a silky finish.

6.76 fl. oz. **939-500**

reg. \$16

**\$12.99**

**Original Bath Oil Spray**

Locks in hydration.

5 fl. oz. **441-692**

reg. \$19

**\$13.99**

**Original Bonus-Size Bath Oil**

Use during or after bath

or shower. 24.6 fl. oz. **663-480**

reg. \$35

**\$26.99**





# THE BEAUTY OF *Argan Oil*

So precious, it's called "liquid gold."

Packed with vitamin E, it helps to visibly restore skin's luster and keep it irresistibly soft.



#### **Gelled Body Oil**

Dries to a silky finish.  
6.76 fl. oz. **908-244**

reg. \$16

**\$12.99**

#### **Bonus-Size Bath Oil**

Hydrates during or  
after bath or shower.

25 fl. oz. **862-920**

reg. \$35

**\$26.99**



## SOFT & SENSUAL

### Shower Gel

5 fl. oz. 914-710 reg. \$9

**\$5.99**

### Bath Oil

Spicy floral scent.

16.9 fl. oz. 504-614 reg. \$25

**\$19.99**

### Bonus-Size Shower Gel

33.8 fl. oz. 018-142 reg. \$19

**\$14.99**

### Body Lotion

11.8 fl. oz. 400-720 reg. \$17

**\$12.99**

### Replenishing Hand Cream

3.4 fl. oz. 779-924 reg. \$8

**NOW \$4.49**

### Bonus-Size Body Lotion

33.8 fl. oz. 825-643 reg. \$26

**\$17.99**

### Beauty Bar Soap

3.17 oz. net wt. 543-215 reg. \$5

**\$3.99**



**Radiant Moisture  
Bonus-Size  
Shower Gel**  
33.8 fl. oz.  
433-922  
reg. \$19  
**NOW \$10.99**



**Radiant Moisture  
Bonus-Size  
Body Lotion**  
48 hours of moisture.  
33.8 fl. oz.  
620-956  
reg. \$26  
**NOW \$13.49**



**Radiant Moisture  
Bonus-Size Bath Oil**  
Hydrates during or  
after bath or shower.  
25 fl. oz. 249-788  
reg. \$30  
**NOW \$18.49**





**Botanical Essence  
Bath Oil**  
With nourishing  
botanical extracts.  
Uplifting herbal scent.  
16.2 fl. oz.  
027-253 reg. \$32  
**NOW \$18.49**



**Radiant Moisture  
Replenishing  
Hand Cream**  
3.4 fl. oz. 776-561  
reg. \$8  
**NOW \$4.49**



**Comforting Shea  
Bath Oil**  
With shea butter  
and oil. Vanilla,  
sandalwood and  
musk scent. 16.9 fl. oz.  
015-071  
reg. \$24  
**NOW \$13.49**



**Radiant Moisture  
Shower Gel**  
Gently cleanses  
and hydrates.  
5 fl. oz. 410-914  
reg. \$9  
**NOW \$4.49**



**Supreme Nourishment  
Enriching Coconut Oil  
Milk Lotion**  
Leaves skin feeling  
silky soft. 11.8 fl. oz.  
419-835  
reg. \$17  
**NOW \$9.49**



**SKIN SO SOFT PURE NATURE  
BODY COLLECTION**

Sustainable\* packaging  
Eucalyptus mint scent

**Revitalizing Body Cream**

Use after bath or shower.  
12 fl. oz. **629-767**  
reg. \$22

**\$16.99**

**Revitalizing Shower Gel**

Richly lathering gel.  
12 fl. oz. **415-170**  
reg. \$22

**\$16.99**

**Revitalizing In-Shower  
Body Lotion**

Apply onto wet skin after  
shower or bath.  
8 fl. oz. **633-857**  
reg. \$22

**\$16.99**

\*Shower Gel and Body Cream bottles: 95% post-consumer recycled material, excluding cap. Body Lotion tube: 55% post-consumer recycled material, excluding cap.



**SKIN SO SOFT PURE NATURE  
HAIR COLLECTION**

Sustainable\* packaging  
Eucalyptus mint scent

**Nourishing Shampoo**

With moisturizing panthenol  
and citric acid, known to help  
balance the scalp's pH.  
12 fl. oz. **290-074**  
reg. \$23

**\$17.99**

**Nourishing Conditioner**

With panthenol. Hair looks  
smooth, healthy and shiny.  
12 fl. oz. **290-089**  
reg. \$23

**\$17.99**

**Intense Nourishing Hair Mask**

Panthenol-infused. Hair  
looks smoother and stronger.  
8 fl. oz. **290-131**  
reg. \$23

**\$17.99**

\*Shampoo and Conditioner bottles: 95% post-consumer recycled material, excluding cap. Hair Mask tube: 55% post-consumer recycled material, excluding cap.



# ooh la lavender



\*Body Lotion contains jasmine essential oil.  
Body & Bath Oil and Sugar Scrub contain jasmine extract.

## SKIN SO SOFT CALMING LAVENDER

Infused with a superior blend of **lavender** and **chamomile** essential oils, plus **jasmine\*** oil and **extract**, for soft, smooth skin with a healthy-looking glow. **Calming lavender scent.**

### Body & Bath Oil

Antioxidant-infused with a luxe blend of lavender and chamomile essential oils, plus jasmine extract. Skin feels so soft and supple.

11.8 fl. oz. **511-354**

reg. \$32

**\$24.99**

### Sugar Scrub

Exfoliating scrub enhanced with a relaxing blend of essential oils and soothing allantoin. Skin looks and feels moisturized and smooth.

9 oz. net wt. **512-418**

reg. \$20

**\$15.99**

### Body Lotion

With sunflower seed oil to help skin feel soft and smooth, rosehip seed oil and shea butter to lock in moisture, plus hydrating hyaluronic acid and soothing aloe. Contains antioxidant-rich resveratrol, known to help skin look youthful. 24-hour moisturization.

11.8 fl. oz. **511-995** reg. \$22

**\$16.99**



**Fresh & Smooth  
Meadowfoam  
Facial Hair  
Removal Cream**  
Dermatologically  
tested. 1 fl. oz.  
**562-543**  
reg. \$13  
**\$9.99**



**Fresh & Smooth  
Body Hair  
Removal Cream**  
4.2 fl. oz.  
**562-467**  
reg. \$10  
**\$7.99**



## facial bar soaps

With Skin So Soft signature oils  
and other active anti-aging ingredients.

**Best of  
K-Beauty**



**Skin So Soft Facial Bar  
Hyaluronic Acid<sup>†</sup> &  
Niacinamide<sup>†</sup>**  
Enriches skin  
with moisture.  
3.1 oz. net wt.  
**364-573** reg. \$6  
**\$4.99**

**Skin So Soft Facial Bar  
Salicylic<sup>††</sup> & Lactic<sup>\*\*\*</sup> Acids**  
Gently exfoliates to  
help skin look softer  
and luxuriously smooth.  
3.1 oz. net wt.  
**364-569** reg. \$6  
**\$4.99**

**Skin So Soft Facial Bar  
Retinol<sup>†††</sup> & Vitamin C<sup>†</sup>**  
Helps visibly even tone,  
brighten and enhance  
skin clarity.  
3.1 oz. net wt.  
**364-607** reg. \$6  
**\$4.99**

**Skin So Soft Facial Bar  
Collagen<sup>††</sup> & Goat Milk<sup>\*\*\*</sup>**  
Deeply hydrates.  
3.1 oz. net wt.  
**364-626** reg. \$6  
**\$4.99**

<sup>†</sup>0.001%. <sup>††</sup>0.0009%. <sup>†††</sup>0.0001%. <sup>††††</sup>0.00001%. <sup>\*\*\*</sup>0.007%.

**Acne-Prone Skin  
Foaming Cleanser**

5 fl. oz.  
041-647  
reg. \$17

**NOW \$9.49**



**Acne-Prone Skin  
Soothing Gel**

6.1 fl. oz.  
040-636  
reg. \$20

**NOW \$11.99**



**Acne-Prone Skin  
Exfoliating  
Body Wash**

10.1 fl. oz.  
041-556  
reg. \$20

**NOW \$11.99**



## Skin So Soft for ACNE-PRONE SKIN

Developed for all skin types  
with gently exfoliating salicylic  
acid. Suitable for daily use.  
Without synthetic fragrances.





**Moisture Therapy Intensive Healing & Repair All Over Rescue Balm Stick**  
 24-hour moisturization in a convenient, mess-free, glide-on stick. Fragrance-free. Apply anywhere on body, face and even lips. Great on the go. .63 oz. net wt. **470-004** reg. \$18  
**\$13.99**



**Moisture Therapy Intensive Healing & Repair All Over Rescue Balm**  
 24-hour moisturization for extra-dry skin. With soothing and smoothing avocado oil and shea butter. Apply anywhere on body, face and even lips to seal in moisture. Fragrance-free. 2.5 fl. oz. **419-840** reg. \$15  
**\$11.99**



**Moisture Therapy Intensive Healing & Repair Extra Strength Cream**  
 24-hour moisturization. Fragrance-free. 5.3 oz. net wt. **224-982** reg. \$9  
**\$6.99**



**Moisture Therapy Intensive Healing & Repair Hand Cream**  
 For extremely dry skin. Moisturizes through hand washings. Fragrance-free. 4.2 fl. oz. **845-982** reg. \$8  
**\$5.99**



**Moisture Therapy Balance + Soothe Body Wash**  
 Softens as it gently cleanses. 13.2 fl. oz. **438-078** reg. \$23  
**NOW \$13.49**



**Moisture Therapy Balance + Soothe Body Lotion**  
 Skin looks softer and healthier. 13.2 fl. oz. **438-082** reg. \$25  
**NOW \$14.99**



# need more? get more... with bonus-size lotions.

**Moisture Therapy**  
**Bonus-Size Body Lotion**  
Each, 33.8 fl. oz. reg. \$25  
**\$19.99 each**

**Intensive Healing & Repair**  
**Bonus-Size Body Lotion**  
72-hour moisture for  
extra-dry skin.  
Fragrance-free.  
**639-745**

**Daily Skin Defense**  
**Bonus-Size Body Lotion**  
Helps restore moisture  
to everyday dry skin.  
**725-793**

**Calming Relief**  
**Bonus-Size Body Lotion**  
Soothes and relieves  
dry, itchy skin.  
Fragrance-free.  
**639-802**



# IS IT HOT IN HERE?!

(or it is me?)

## **NEW! Hit Pause**

Look and feel your best through menopause and peri-menopause.

A cool rose-scented collection  
formulated with Superfood  
Amla Berry Extract.



Hot flash on the go?  
No sweat!

**Refreshing Wipes**

Pre-moistened towelettes remove sweat and dirt from your face, hands and body, with no water or rinsing needed. Safe for external down-there places, armpits or anywhere you need to refresh.

Rose scent. 30 wipes.

264-264 reg. \$13

**\$9.99**



Body craving  
moisture all over?  
Drink up.

**Hydrating Body Cream**

Lightweight, fast-absorbing moisturizer with panthenol to help soothe skin and combat dryness, boost elasticity and reduce the appearance of crepiness. 6.7 fl. oz.

263-990 reg. \$22

**\$16.99**

Hot flash? Night sweats? Chill out.

**All Over Cooling Mist**

Instant cooling refreshment for face or body to energize and hydrate. Spray anytime. 3.4 fl. oz.

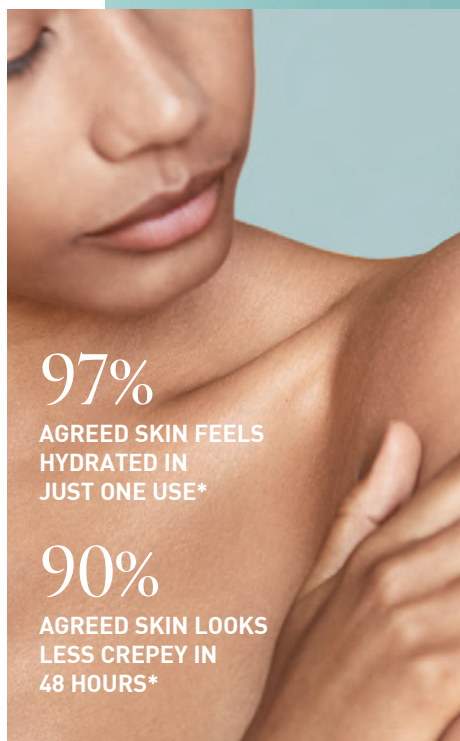
264-336 reg. \$25

**\$19.99**





## *new Organist Algae Collection for body*



97%

AGREED SKIN FEELS  
HYDRATED IN  
JUST ONE USE\*

90%

AGREED SKIN LOOKS  
LESS CREPEY IN  
48 HOURS\*

### **GREEN ALGAE COMPLEX**

*Key ingredients for your body*



#### **SEAWEED:**

Known to combat dryness so skin feels soft and supple.



#### **KELP:**

A marine botanical that helps to intensely moisturize skin.



#### **CHLORELLA:**

Known to hydrate to help enhance skin's natural radiance.



#### **HIJIKI:**

A seaweed known to help moisturize for visibly glowing skin.



#### **HYALURONIC ACID:**

Helps deliver lasting hydration so skin looks soft and plump.



#### **SQUALANE:**

Helps hydrate, improve skin elasticity and visibly smooth lines.



**JELLY BODY WASH**  
is infused with  
**Hydro Green Pearls** that  
dissolve on contact  
for extra hydration.

# Replenish

and brighten the look of dry, dull skin

## NEW

### Organist Algae Jelly Body Wash

With skin-replenishing botanicals and algae, plus Hydro Green Pearls that dissolve on contact, to help hydrate and support moisture barrier as it cleanses. Softens and refreshes the look of dry, dull skin for a healthy-looking glow.

16.9 fl. oz. 286-520 reg. \$22

**\$16.99**

## NEW

### Organist Algae Whipped Body Cream

Helps deliver intense, lasting moisture for soft, supple, velvety-smooth skin and enhance natural radiance for a youthful-looking glow. Enriched with 10% squalane to help support skin's moisture barrier and visibly boost elasticity.

4.5 fl. oz. 286-591 reg. \$22

**\$16.99**



*new Organist Algae Collection for hair*

100%

AGREED HAIR  
LOOKS NOTICEABLY  
LESS FRIZZY\*

100%

AGREED HAIR  
FEELS SMOOTHER,  
STRONGER,  
HEALTHIER†



**SPLIT-END CARE:**  
Mask helps visibly  
reduce split ends  
so hair looks  
glossy and healthy



**GREEN ALGAE  
COMPLEX for hair:**

Seaweed, Kelp,  
Chlorella, Hijiki





# Quench dry, frizzy, thirsty strands



**NEW**

**Organist Algae Moisture Shampoo**

Lightweight jelly formula delivers an intense wave of deep hydration. Hair feels soft and nourished. Helps tame frizz and visibly reduce split ends for a sleek, polished look. Refreshes scalp.

16.9 fl. oz.

286-410 reg. \$22

**\$16.99**

**NEW**

**Organist Algae Deep Moisture Hair Mask**

For deep moisture and frizz control. Perfect for dry hair, leaves strands feeling softer, stronger and frizz-free. Intensely hydrates with hyaluronic acid. Infused with hair-nourishing Hydro Green Pearls that dissolve on contact. 6.7 fl. oz.

286-462 reg. \$21

**\$15.99**

## Organist **Rosemary + Mint** | *strengthening*

- helps hydrate and revitalize the scalp so it feels refreshed, and helps support a thicker-, fuller-looking mane of hair
- rich in antioxidants to support healthy-looking hair and scalp



### **Rosemary Mint**

With rosemary and biotin, helps keep scalp and hair looking healthy. Refreshing, cooling peppermint helps scalp feel revitalized.

**Strengthening Shampoo 542-974**

**Strengthening Conditioner 542-993**

Each, 16.9 fl. oz.  
reg. \$22

**\$16.99 each**

### **Rosemary Mint Scalp Strengthening Tonic**

With rosemary, mint, biotin and caffeine. Scalp feels nourished and revitalized with a cooling sensation. Hair looks fuller, thicker, stronger. 5 fl. oz. **544-427**  
reg. \$25

**\$19.99**

### **Rosemary Mint Hair Strengthening Oil**

2-in-1 daily-use oil for hair and scalp. With essential oils, 99% derived from plants, plus biotin. Hair feels fortified, nourished and refreshed. 2 fl. oz. **542-845** reg. \$25

**\$19.99**

### **Rosemary Mint Body Wash**

Formulated with AHA/BHA/PHA and panthenol. 16.9 fl. oz.

**544-446**  
reg. \$22

**\$16.99**

### **Gua Sha Scalp Massager**

For scalp, neck and body. Helps improve circulation for visibly strong, healthy hair. 100% wood. **542-960**  
reg. \$25

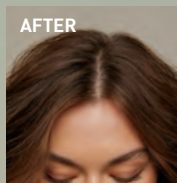
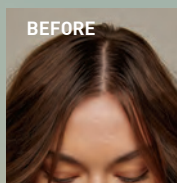
**\$19.99**





# dry shampoo on the go

Travel-friendly scalp puff with  
revitalizing rosemary and biotin



Images are simulations for  
illustrative purposes only.  
Individual results may vary.



**NEW**

## Organist Rosemary Mint with Biotin Dry Shampoo Puff

Easy-to-use, mess-free puff applicator. Fast-acting formula with a revitalizing blend of rosemary, mint and biotin absorbs excess oil on scalp and roots. Hair looks clean and fresh between washes. Formulated without sulfates and parabens. 0.28 fl. oz. **078-787**  
reg. \$25

**\$19.99**



# Organist Rice Water | *nourishing*

- a time-honored Asian beauty secret
- rich in amino acids, vitamins B and E and minerals
- helps reduce breakage and split ends to smooth hair and improve shine and manageability



add moisture to dry, damaged hair for a healthy-looking shine

## CLEANSE

### Damage Care Shampoo

With biotin, ceramide, protein and 17 amino acids to deeply nourish each strand, restoring strength and resilience. Enriching rice water helps transform dry hair into a silky mane. 16.9 fl. oz.

381-803 reg. \$22

**\$16.99**

## TREAT

### Damage Care Treatment

Perfect for hair in need of hydration and repair. Biotin, protein and 17 amino acids help nourish each strand from within. Hyaluronic acid and collagen help smooth hair for resilience and softness. 6.7 fl. oz.

381-860 reg. \$22

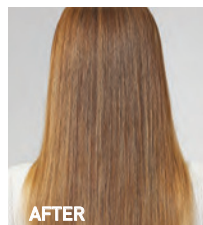
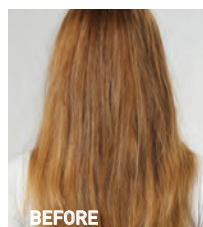
**\$16.99**



jasmine  
and  
freesia  
scent

Nourishing  
Oil Layer

Hydrating  
Essence Layer



nourish + hydrate  
hair with an uplifting  
fragrance mist

#### Moisture Replenish Hair Mist

Two-layer mist: a hydrating essence plus five plant oils, including jojoba and argan oils, for deep moisturization. Rice water, biotin, ceramide, protein and amino acids help revitalize, nourish and soften dry, damaged hair. Shake well before use. Use on damp or dry hair. Fresh floral scent. 2.7 fl. oz. **381-985** reg. \$25

**\$19.99**

Images show results using Organist Rice Water Moisture Replenish Hair Mist as directed. Mist was applied multiple times on dry hair. Minimal styling for consistency. Results may vary.

## FOR BODY

With **antioxidants** ideal for helping to moisturize dry skin

### CLEANSE

#### Nourishing Body Wash

With soap derived from olive oil. Contains panthenol and hyaluronic acid. Helps skin appear soft and moisturized. 16.9 fl. oz. **382-097** reg. \$19

**\$14.99**

### NOURISH

#### Nourishing Body Milk

With plant-derived moisturizer and plant-derived oil (squalane) to help hydrate and nourish dry skin. Easily absorbed. Nongreasy. 10 fl. oz. **382-336** reg. \$19

**\$14.99**



# Organist Apple Cider Vinegar | *clarifying*

- helps remove oil and buildup accumulated on scalp and hair
- a popular rinse-off method known to help maintain the scalp's pH balance and add shine to hair

## Clarifying Shampoo

For oily hair. Helps clarify and nourish scalp and hair for healthy-looking shine as it cleanses.  
16.9 fl. oz. **482-650** reg. \$22

## Clarifying Conditioner

For oily, dull hair. Helps clarify and nourish scalp and hair for a healthy-looking shine.  
16.9 fl. oz. **482-664** reg. \$22

**\$16.99 each**

## Clarifying Water Treatment

Rinse-out treatment infused with collagen and hyaluronic acid. Formulated to clarify hair and help it look naturally soft instantly with a healthy shine.  
6 fl. oz. **482-717** reg. \$19

**\$14.99**

## Scalp Tonic

Leave-on scalp tonic with a blend of 10 natural herbs. Helps dissolve oily buildup and revitalizes scalp.

5 fl. oz.  
**482-721**  
reg. \$24

**\$18.99**



## FOR BODY

### Apple Cider Vinegar Body Wash

For normal to oily skin. It blends apple cider vinegar extract with panthenol so skin feels refreshed and nourished. 16.9 fl. oz.

**482-740**  
reg. \$19

**\$14.99**



### Apple Cider Vinegar Exfoliating Body Scrub

With panthenol and AHA/BHA/PHA, it gently exfoliates dead skin cells to help skin look and feel refreshed all over.

6.7 fl. oz. **482-846**  
reg. \$19

**\$14.99**





# Organist Botanical Castile Soap

Daily vegan washes for face and body infused with soap made from olive oil and formulated without parabens, silicone oil or sulfates. Leaves skin feeling refreshed, revitalized and luxuriously moisturized while it cleanses.

## revitalize

### FOR OILY SKIN Tea Tree & AHA BHA

Controls oil as it deeply cleanses and refreshes. Fresh herbal scent.

16.2 fl. oz. **348-115**

reg. \$19

**\$14.99**

## moisturize

### FOR DRY SKIN Rose Water & Hyaluronic Acid

Low-pH formula helps replenish soothing moisture. Crisp floral scent. 16.2 fl. oz. **348-100** reg. \$19

**\$14.99**

## NEW

## soothe

### FOR NORMAL SKIN Lavender Oil & Vitamin E

With ingredients that help skin feel refreshed and promote a relaxing experience. Calming lavender scent. 16.2 fl. oz. **048-398** reg. \$19

**\$14.99**



Best of  
K-Beauty

## SENSES AQUATIC BREEZE

### Bubble Bath

24 fl. oz.

746-388

reg. \$16

**\$12.99**

### Body Scrub

8.5 oz. net wt.

746-426

reg. \$24

**\$18.99**



## SENSES SUN-KISSED COCONUT

### Bubble Bath

24 fl. oz.

746-369

reg. \$16

**\$12.99**

### Body Scrub

8.5 oz. net wt.

746-407

reg. \$24

**\$18.99**



## SENSES STRAWBERRY SUNSET

### Bubble Bath

24 fl. oz. 746-354

reg. \$16

**\$12.99**

### Body Scrub

8.5 oz. net wt. 746-392

reg. \$24

**\$18.99**



## SENSES CARAMEL SOL

### Bubble Bath

24 fl. oz.

746-373

reg. \$16

**\$12.99**

### Body Scrub

8.5 oz. net wt.

746-411

reg. \$24

**\$18.99**





# soak away stress

**Senses Bubble Bath**  
24 baths in every bottle.  
Each, 24 fl. oz. reg. \$16

**\$12.99**



**Senses Lip Balm**  
**Strawberry**  
**554-219**  
.14 oz. net wt.  
reg. \$3.50  
**\$2.49**



**Senses Shower Gel**  
**Fresh**  
**Cucumber & Melon**  
5 fl. oz.  
**400-716**  
reg. \$8  
**\$5.99**



**Senses Shower Gel**  
**Blushing**  
**Cherry Blossom**  
5 fl. oz.  
**921-847**  
reg. \$8  
**\$5.99**



**Senses Lip Balm**  
**Cherry**  
**554-223**  
.14 oz. net wt.  
reg. \$3.50  
**\$2.49**



**Senses Shower Gel**  
**Silky Vanilla**  
5 fl. oz.  
**248-140**  
reg. \$8  
**\$5.99**



**Senses Shower Gel**  
**Juicy**  
**Pomegranate & Mango**  
5 fl. oz.  
**248-155**  
reg. \$8  
**\$5.99**





Best of  
K-Beauty

AN ORAL CARE  
INNOVATION:

## HIMALAYA PINK SALT

For a healthy-looking, whiter,  
brighter smile. Enriched with  
Himalayan Pink Salt.

### Himalaya Pink Salt Whitening Toothbrush (Medium)

Bristles are infused with Himalayan pink salt for effective cleansing and a gentle brightening effect. Medium-sized brush. High-tension bristles penetrate narrow gaps.

729-359

reg. \$8

**\$5.99**



### Himalaya Pink Salt Intensive Whitening Toothbrush (Large)

Bristles are infused with Himalayan pink salt for effective cleansing and a brightening effect. Large-sized brush. High-tension bristles penetrate narrow gaps.

035-812 reg. \$9

**\$6.59**



### Himalaya Pink Salt Purple Whitening Toothbrush

Purple color fades as bristles wear, reminding you to replace. Clinically tested to remove 4X more interdental plaque.\* Bristles with 2X the elasticity clean narrow gaps between teeth and the gum line.

383-165 reg. \$9

**\$6.59**

\*Compared to LG H&H regular toothbrush with soft bristles.



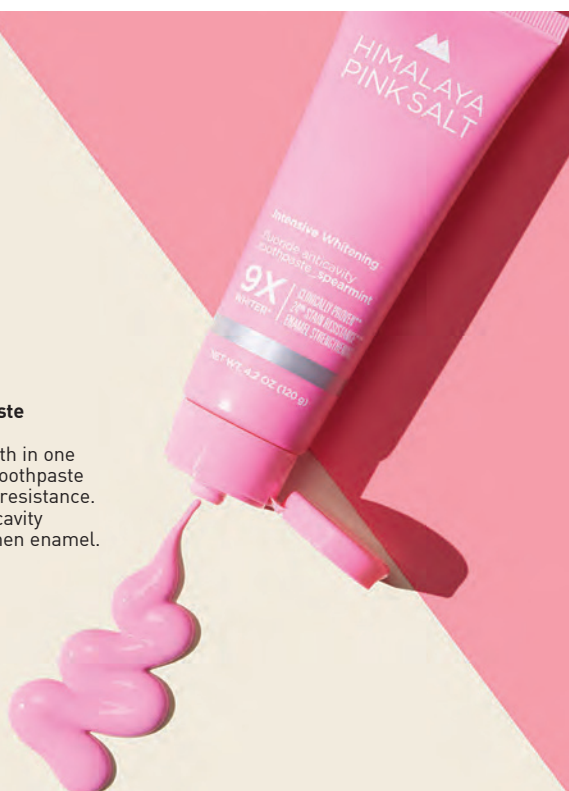


**Himalaya Pink Salt  
Intensive Whitening Toothpaste  
(with Fluoride) 3-Piece Pack**

Clinically tested to whiten teeth in one week; 9X more than regular toothpaste without SHMP. 24-hour stain resistance. With sodium fluoride, an anticavity ingredient that helps strengthen enamel. Pink paste. Spearmint flavor. Each, 4.2 oz. net wt. **729-689** reg. \$36

**\$26.99**

**the 3-piece pack**



**Himalaya Pink Salt Purple Color  
Corrector + Intensive  
Whitening Toothpaste  
(with Fluoride)**

Purple toothpaste with advanced color-correcting power. Clinically tested to reduce yellow stains on teeth by 2X after one use; 9X more than regular toothpaste. Visibly whiter teeth in one week. 24-hour stain resistance. Vanilla mint flavor. Formulated without parabens, gluten, phthalates and triclosan.

3.5 oz. net wt.

**383-624** reg. \$17

**\$12.99**



**Himalaya Pink Salt  
Whitening  
Natural Salt  
Toothpaste  
(Fluoride-Free)**

Helps reduce plaque, gently whiten teeth and naturally freshen breath. Contains essential minerals and bifidus essences. Pink gel. Spearmint flavor. Formulated without parabens, gluten and triclosan.

3.9 oz. net wt.

**943-112** reg. \$12

**\$8.79**



**Foot Works  
Intensive Moisture  
Foot Cream**

Suitable for  
diabetics.

2.5 fl. oz.

**069-016**

reg. \$12

**\$9.49**



**Foot Works  
Arthritis Achy Foot  
and Muscle Cream**

Contains glucosamine  
and chondroitin.

2.5 fl. oz.

**208-400**

reg. \$12

**\$9.49**



**Foot Works  
Maximum Strength  
Cracked Heel Cream**

Transforms the  
look and feel of dry,  
cracked heels.

2.5 fl. oz.

**086-762**

reg. \$12

**\$9.49**



**Foot Works  
Intensive  
Callus Cream**

Softens and  
moisturizes dry,  
rough skin.

3.2 oz. net wt.

**851-310**

reg. \$12

**\$9.49**



**Foot Works  
Deodorizing  
Spray**

Can also be used  
in footwear.

3.5 oz. net wt.

**313-236**

reg. \$15

**\$11.99**



**Foot Works  
Pedicure Tool**

**592-712**

reg. \$12

**\$9.49**

4 in 1:

- Fine-grain file
- Metal file
- Pumice
- Brush



**Foot Works Pedicure Kit**

Case, 3½" L x 4¾" W.

**121-029**

reg. \$15

**NOW \$8.99**

Kit includes:

- Nail clipper
- Toenail clipper
- Scissors
- Small nail file
- Cuticle pusher





**Bug Guard Plus  
Picaridin  
Aerosol Spray**  
4 oz. net wt.  
315-243  
reg. \$25  
**\$19.99**



## make the great outdoors yours

Our DEET-free repellents protect your family without chemicals that feel harsh on skin.

**Bug Guard** repels deer ticks that may carry and transmit Lyme disease.



**Bug Guard Plus  
Picaridin  
Family-Size  
Pump Spray**  
8 fl. oz.  
510-195  
reg. \$25.50  
**\$19.99**



**Bug Guard Plus  
Picaridin  
Pump Spray**  
4 fl. oz.  
510-161  
reg. \$19.25  
**\$13.99**



**Bug Guard Plus  
Picaridin  
Towelettes**  
Each, 9" L x 5½" W, .3 fl. oz.  
269-562 reg. \$16  
**\$12.99 pack of 8**



**Bug Guard Plus  
IR3535® Expedition  
Aerosol Spray SPF 28**  
Repels mosquitoes that may transmit West Nile virus for 8 hours. Repels deer ticks for 12 hours.  
4 oz. net wt.  
521-370  
reg. \$25  
**\$19.99**



**Bug Guard Plus IR3535®  
Gentle Breeze  
SPF 30 Lotion**  
4 fl. oz.  
781-940  
reg. \$19  
**\$14.99**



**Bug Guard Plus  
Anti-Itch Spray**  
Provides temporary itch relief from insect bites. Does not repel insects. Use as directed. 2 fl. oz.  
510-032  
reg. \$15  
**\$10.99**



**Veilment  
Glacial Water  
Cooling Body Scrub  
& Cleanser**

13.5 fl. oz.

**573-480**

reg. \$18

**NOW \$10.49**



**Veilment  
Dead Sea Salt  
Body Scrub  
& Cleanser**

13.5 fl. oz.

**781-992**

reg. \$18

**NOW \$10.49**



**Veilment  
Black Rose  
Body Scrub  
& Cleanser**

13.5 fl. oz.

**707-969**

reg. \$18

**NOW \$10.49**



**Veilment  
Himalaya Pink Salt  
Exfoliating Soap**

5.3 oz. net wt. **260-440**

reg. \$8

**NOW \$4.49**



**Avon Shower Brush**

Long handle to reach down back. Brush helps remove dead skin cells as it cleanses. Back of brush features massage nubs. Non-slip, comfort handle has a convenient hanging loop. **904-727**

reg. \$11

**\$8.49**

**Exfoliation Mitt**

Microfiber jacquard, with nylon/spandex cuff. **439-734**

reg. \$14

**\$10.99**





Rare Pearls  
906-897



Haiku  
809-060



Odyssey  
740-250



Sweet Honesty  
439-021



Timeless  
885-302



Candid  
656-095



Rare Gold  
613-154



Far Away  
891-376



Imari  
464-366



Night Magic  
Evening Musk  
862-590



Skin So Soft  
Soft & Sensual  
050-820



Cool Confidence  
Original  
872-469



Cool Confidence  
Baby Powder  
427-275



Feelin' Fresh  
Original  
907-750



On Duty Sport  
875-726



On Duty Unscented  
464-351



On Duty Original  
393-970



Black Suede  
813-567



Mesmerize  
875-874



Wild Country  
656-080

**Roll-On  
Anti-Perspirant  
Deodorant**  
Each, 2.6 fl. oz.  
reg. \$6.25  
**\$4.99 each**

### Perfumed Liquid Deodorant

Soft floral scent. Aluminum-free.  
Fast-drying. Easy fingertip application.  
2 fl. oz. **889-915**  
reg. \$10

**\$7.49**



### Avon Microbiome by Reach® Hygiene Deodorant Stick

Floral citrus scent. Aluminum-free. 24-hour odor protection.  
2.65 oz. net wt.

**524-528**  
reg. \$16

**\$12.99**







# ROOTS? NEVER.

**Root Touch-Up**  
Instantly covers roots and bare spots.  
With black bean and ginseng. Built-in  
mirror. Each, .25 oz. net wt. reg. \$20  
**\$15.99 each**



Reddish  
Brown  
243-627



Light  
Brown  
244-642



Dark Brown  
245-213



Black  
245-251



**Avon  
Detangling  
Comb**  
504-820  
reg. \$9  
**\$6.49**

**Avon  
Blow-Dry  
Round Hairbrush**  
504-800  
reg. \$20  
**\$15.99**

**Avon  
Detangling  
Hairbrush**  
504-815  
reg. \$14  
**\$10.99**

**Avon  
Compact  
Hairbrush**  
504-743  
reg. \$11  
**\$8.49**



**Elastine  
PropoliThera  
Damage Repair  
Shampoo**  
16.9 fl. oz.  
053-082  
reg. \$20  
**NOW \$11.99**



**Elastine  
PropoliThera  
Damage Repair  
Conditioner**  
16.9 fl. oz.  
638-681  
reg. \$20  
**NOW \$11.99**



**Best of  
K-Beauty**

**Elastine PropoliThera  
Hair Deep Conditioning  
Treatment Cap**  
053-761  
reg. \$9  
**NOW  
\$4.99**



**Elastine  
PropoliThera  
Hair Oil Serum**  
5.7 fl. oz.  
895-190  
reg. \$23  
**NOW \$12.49**





**Dr. Groot  
Premium  
Scalp Cleansing Brush**  
Helps reinvigorate  
scalp health and  
stimulate circulation.  
**065-776 reg. \$20**  
**\$16**



**Dr. Groot  
Anti-Dandruff  
Scalp Care Shampoo**  
Contains 3% salicylic  
acid, biotin, caffeine,  
rosemary and menthol.  
No silicones. 10.1 fl. oz.  
**451-412 reg. \$30**  
**\$22.99**



**Dr. Groot  
Scalp Fortifying  
Serum Treatment**  
Moisturizes and  
helps support healthy  
hair roots. 6.7 fl. oz.  
**782-271 reg. \$35**  
**\$29**



**Dr. Groot  
Scalp Fortifying  
Hair-Thickening Shampoo**  
With coconut oil, cleanses  
as it helps moisturize dry  
scalp and hair. 13.5 fl. oz.  
**778-014 reg. \$35**  
**\$29**



**Dr. Groot  
Professional  
Bonding System 01  
Bond Fortifying Shampoo**  
Helps fortify hair from  
the roots and visibly  
restore smoothness.  
13 fl. oz. **701-607**  
**\$30**



**Dr. Groot  
Professional  
Bonding System 02  
Keratin Water Treatment**  
Water-to-cream formula.  
Hair looks instantly  
smoother. Use 2X-3X  
a week. 6.7 fl. oz.  
**701-611**  
**\$30**



**Dr. Groot  
Professional  
Bonding System 03  
Bond Fortifying  
Conditioner**  
Instantly helps minimize  
frizz.\* 8.4 fl. oz. **701-865**  
**\$30**

\*Based on a clinical test of 19 hair tresses.



**Dr. Groot  
Professional  
Bonding System 04  
Bond Fortifying  
Instant Repair Serum**  
Restorative leave-in  
serum. Apply to damp  
or dry hair. 4.2 fl. oz.  
**702-130**  
**\$30**



# WANT GREAT HAIR? START AT THE SCALP.

## Dr. Groot Scalp Revitalizing Solution

Think of scalp care as an extension of skin care. With **biotin** and **capsulated prebiotics**, these formulas offer a uniquely customized solution that gets to the root of your problem.



### Scalp Revitalizing Solution Hair Thickening Shampoo

Helps hair look thicker and fuller. Infused with biotin and prebiotics.

13 fl. oz.

715-064

**\$30**

### Scalp Revitalizing Solution Purifying Clay Shampoo

Instantly purify roots, hydrate dry ends. With three kinds of clay (white, herbal, glacial) plus biotin and salicylic acid. 13 fl. oz.

715-098

**\$30**

### Scalp Revitalizing Solution Scalp Relief Tonic

Helps hydrate dry scalp. With calming chamomile, moisturizing niacinamide and cooling menthol.

4.73 fl. oz.

717-110

**\$30**

### Scalp Revitalizing Solution Scalp Soothing Shampoo

Helps refresh, moisturize and comfort your scalp. With biotin and cica extract. 13 fl. oz.

715-083

**\$30**

### Scalp Revitalizing Solution Miracle in Shower Treatment

Hair looks smoother and healthier instantly. With nourishing arginine, panthenol, niacinamide and salicylic acid.

8.4 fl. oz.

715-451

**\$30**

Best of  
K-Beauty



## NEW

### ❖ Denim Jacket

Vintage wash oversized denim jacket. Features side seam pockets, front chest pockets and faux shearling collar. Cotton/polyester/ rayon/spandex. Center back length: 27½" on all sizes. Machine wash, line dry. Imported.

XS(0-2) 535-775

S(4-6) 535-828

M(8-10) 535-870

L(12-14) 535-890

XL(16) 536-126

1X(18W-20W) 537-687

2X(22W-24W) 537-706

3X(26W-28W) 537-869

reg. \$74.99

**\$59.99**

4-Pack Fall Tees sold  
on page 137.

OVERSIZED  
DENIM  
JACKET  
with side  
seam  
pockets



# forever faves

A denim jacket with a cool vintage wash, plus a bag with secret storage and coordinating boots are wear-now, wear-everywhere essentials you'll love to live in year after year.

## NEW

### ❖ Studded Butler Bag

Merlot-colored leatherlike tote bag with stud details on front and top zip-closure. Features removable organizer with dividers, inside slotted pockets for additional organization and outside zip-pocket on back. Body: man-made materials. Lining: 100% polyester. 17" L x 6" W x 13½" H. Center handle drop: 11" L. Imported. **535-670** reg. \$64.99

**\$49.99**

**The beloved Butler Bag is back!**  
The stylish solution to organization on the go.

4-Pack Fall Tees sold on page 137.

Features removable organizer.



Smart design and hidden storage helps keep everything in its place.





**NEW**

❖ **Casual Chelsea Boot**

Black leatherlike boot with outside merlot-colored elastic gore and inside zipper for easy on/off. Treaded rubber outsole. Man-made materials. Ankle-height-length shaft. 1½" L lug sole. Half sizes should size up. Imported.

6 535-684 8 535-703 10 535-722

7 535-699 9 535-718 11 535-756

reg. \$53.99

**\$42.99**

Studded Butler  
Bag sold on  
page 129.  
Pairs perfectly  
with the Casual  
Chelsea Boot.



cool &

ELASTIC  
GORE  
inset and  
inside  
zipper  
for easy  
on/off



**NEW**❖ **Button Detail Shirt**

Ivory V-neck shirt with front button placket, chest pockets and long sleeves. Features side slits with functional button detailing. Polyester/rayon/linen. Center back length: 27" on M; 28" on 1X. Machine wash, line dry. Imported.

XS(0-2) **538-019**S(4-6) **538-057**M(8-10) **562-414**L(12-14) **562-429**XL(16) **562-433**1X(18W-20W) **562-448**2X(22W-24W) **562-471**3X(26W-28W) **600-440**

reg. \$46.99

**\$36.99**

**SIDE SLITS  
with  
functional  
buttons**

# crisp

**SATIN FINISH  
and classic  
pull-on  
styling**

**NEW**❖ **Shiny Legging**

Black pull-on leggings with elastic waistband. Features a soft-shine satin finish and classic fit. Polyamide/spandex. Inseam: 28" on all sizes. Machine wash, dry flat. Imported.

XS(0-2) **562-486**S(4-6) **565-030**M(8-10) **566-553**L(12-14) **566-610**XL(16) **568-670**1X(18W-20W) **568-690**2X(22W-24W) **568-704**3X(26W-28W) **569-060**

reg. \$46.99

**\$36.99**

# pattern play

## NEW

### ❖ Grid Print Dress

Black/white/golden yellow grid-print dress with  $\frac{3}{4}$ -length sleeves and lining at skirt. Features V-neck with ruffle collar and fabric self-tie belt at waist. Body: polyester/spandex. Lining: 100% polyester. Center back length: 40" on M; 40½" on 1X.

Machine wash, line dry. Imported.

XS(0-2) **569-165**

S(4-6) **569-170**

M(8-10) **569-199**

L(12-14) **569-222**

XL(16) **569-241**

1X(18W-20W) **600-249**

2X(22W-24W) **600-416**

3X(26W-28W) **600-469**

reg. \$53.99

**\$42.99**

Circle of Elegance Collection  
sold on page 145.

V-NECK  
with  
ruffle  
collar







## NEW

### ❖ 2-Pack Mock Neck Shirts

Includes black/white zebra-print and merlot-colored animal-print long-sleeve tops with mock neck. Polyester/spandex. Center back length: 26½" on M; 27½" on 1X. Machine wash and dry. Imported.  
reg. \$42.99

**\$34.99**

XS(0-2) **600-492**  
S(4-6) **600-545**  
M(8-10) **600-550**  
L(12-14) **600-640**  
XL(16) **600-784**  
1X(18W-20W) **600-799**  
2X(22W-24W) **600-803**  
3X(26W-28W) **600-841**

Shiny Legging sold on page 131.



## cool & comfy combos

Easy-wearing neutrals with  
complementary stripes,  
plus cozy-meets-sporty pairings...  
and bring on the tees, please.

### ❖ Striped Sweatshirt

Black/cream stripe terry sweatshirt with ribbed collar and cuffs and side slits. 100% cotton. Center back length: 23½" on M; 24½" on 1X. Machine wash, dry flat. Imported.

XS(0-2) **464-533**

S(4-6) **464-662**

M(8-10) **464-830**

L(12-14) **464-844**

XL(16) **464-859**

1X(18W-20W) **464-878**

2X(22W-24W) **465-070**

3X(26W-28W) **465-104**

reg. \$46.99

**\$36.99**

### ❖ Side Stripe Trouser

Black trousers with cream side stripe. Features button front, side seam pockets and elastic-back waist. Polyester/spandex. Inseam: 30" on all sizes. Machine wash, line dry. Imported.

XS(0-2) **465-195**

S(4-6) **465-200**

M(8-10) **465-248**

L(12-14) **465-362**

XL(16) **465-377**

1X(18W-20W) **465-396**

2X(22W-24W) **465-802**

3X(26W-28W) **465-836**

reg. \$44.99

**\$34.99**



## soft wear

Paired with  
whisper white  
4-Pack Fall  
Tees sold on  
page 137.



TWO FRONT  
pockets



FLARED  
LEG  
with  
zipper  
slits



## ❖ Flared Legging

Blue classic sporty leggings with elastic waistband. Flared leg features zipper side slits at ankle. Polyester/spandex. Inseam: 30" on all sizes. Machine wash, dry flat. Imported.

XS(0-2) **466-957**

S(4-6) **467-714**

M(8-10) **469-406**

L(12-14) **471-656**

XL(16) **472-208**

1X(18W-20W) **472-580**

2X(22W-24W) **472-595**

3X(26W-28W) **472-614**

reg. \$49.99

**\$39.99**

## ❖ Cozy Cardigan

Smoke grey soft marled open-front cardigan with two front pockets. Polyester/spandex. Center back length: 36" on M; 37" on 1X. Machine wash, line dry. Imported.

XS(0-2) **465-855**

S(4-6) **465-874**

M(8-10) **465-893**

L(12-14) **465-908**

XL(16) **465-931**

1X(18W-20W) **465-965**

2X(22W-24W) **466-043**

3X(26W-28W) **466-593**

reg. \$53.99

**\$42.99**

Celestial Spark Necklace and Earring  
Set sold on page 150.

Paired with whisper white 4-Pack Fall  
Tees sold on page 137.



# one hit wonder

Look effortlessly chic with just one piece!

**BOAT NECKLINE**  
plus side slits  
and fabric  
self-tie belt

## ❖ Boat Neck Dress

Heather grey dress with boat neckline, long sleeves and side slits. Features fabric self-tie belt at waist. Cotton/polyester. Center back length: 36" on all sizes. Machine wash and dry. Imported.

XS(0-2) **473-405**

S(4-6) **473-477**

M(8-10) **473-534**

L(12-14) **473-568**

XL(16) **473-572**

1X(18W-20W) **473-663**

2X(22W-24W) **473-678**

3X(26W-28W) **473-682**

reg. \$64.99

**\$49.99**

Boho Wanderer Hoop Earrings and Semi-Precious Keepsake Locket sold on pages 151 & 148.



Contour Links  
Earring Set sold  
on page 150.



CLASSIC  
CREW-NECK  
tees with  
front pocket

# tees with ease

## ❖ 4-Pack Fall Tees

Includes mocha animal-print, mocha, teal blue and whisper white classic crew-neck tees with front chest pocket and short sleeves. Cotton/polyester. Center back length: 25" on M; 27½" on 1X. Machine wash and dry. Imported.

XS(0-2) **472-834**

XL(16) **473-333**

S(4-6) **473-003**

1X(18W-20W) **473-348**

M(8-10) **473-041**

2X(22W-24W) **473-352**

L(12-14) **473-238**

3X(26W-28W) **473-371**

reg. \$49.99

## \$44.99 the pack

(Mocha) Violet Ivy Ombré Earrings sold on page 145.

### APPAREL SIZE CHART

SIZE	BUST	WAIST	HIP
<b>XS</b> 0/2	30.5"-32"	23.5"-25"	32.5"-34"
<b>S</b> 4/6	33.5"-35"	26.5"-28"	35.5"-37"
<b>M</b> 8/10	36.5"-38"	29.5"-31"	38.5"-40"
<b>L</b> 12/14	39.5"-41"	32.5"-34"	41.5"-43"
<b>XL</b> 16	43"-44"	35.5"-36.5"	44.5"-45.5"
<b>1X</b> 18W/20W	46.5"-48.5"	39"-41"	48"-50"
<b>2X</b> 22W/24W	50.5"-52.5"	43"-45"	52"-54"
<b>3X</b> 26W/28W	54.5"-56.5"	47"-49"	56"-58"



**2-PACK**

## twice as nice

❖ **2-Pack Long-Sleeve Tee**  
Includes ivory and cherry long-sleeve tees with scoop neckline. Cotton/spandex. Center back length: 23" on M; 25" on 1X. Machine wash and dry. Imported.

XS(0-2)	<b>272-440</b>
S(4-6)	<b>273-098</b>
M(8-10)	<b>273-193</b>
L(12-14)	<b>273-576</b>
XL(16)	<b>275-636</b>
1X(18W-20W)	<b>277-457</b>
2X(22W-24W)	<b>278-578</b>
3X(26W-28W)	<b>278-654</b>

reg. \$49.99

**\$39.99 the pack**



❖ **Lightweight Trench Coat**  
Black trench coat with front button closure and removable fabric self-tie belt at waist. Features cherry-colored lining. Body and lining: 100% polyester. Center back length: 36" on all sizes. Machine wash, line dry (remove belt before washing). Imported.

XS(0-2)	<b>264-738</b>
S(4-6)	<b>264-757</b>
M(8-10)	<b>264-780</b>
L(12-14)	<b>264-833</b>
XL(16)	<b>264-962</b>
1X(18W-20W)	<b>265-002</b>
2X(22W-24W)	<b>265-199</b>
3X(26W-28W)	<b>265-806</b>

reg. \$64.99

**\$49.99**



❖ **Tassel Clutch**  
Cherry faux-leather textured clutch with top zip-closure and inside zip-pocket. Features side tassels, goldtone hardware and handle piece with functional snap closure (not removable). Man-made materials. Lining: 100% polyester. 9½" L x 4¼" W x 5¼" H. Handle drop: 4¼" L. Imported. **270-687**

reg. \$42.99

**\$32.99**





#### ❖ Animal-Print Dress

Animal-print dress with collar, button front and long sleeves. Features removable fabric self-tie belt at waist. Polyester/spandex. Center back length: 48½" on M; 49½" on 1X. Machine wash, line dry (remove belt before washing). Imported.

XS(0-2) **264-340** L(12-14) **264-522** 2X(22W-24W) **264-670**

S(4-6) **264-355** XL(16) **264-609** 3X(26W-28W) **264-719**

M(8-10) **264-360** 1X(18W-20W) **264-647**

reg. \$49.99

**\$39.99**

Bold Chain Luxe Necklace, Rippled Flow Hoop Earrings and Goldtone Signet Ring Set, sold on page 152.



#### ❖ Roll-Sleeve Button-Down Top

Ivory satin button-down top with adjustable roll-tab sleeves. Polyester/spandex. Center back length: 27" on M; 28" on 1X. Machine wash, line dry. Imported.

XS(0-2) **265-859**

S(4-6) **265-863**

M(8-10) **266-802**

L(12-14) **267-244**

XL(16) **267-320**

1X(18W-20W) **268-293**

2X(22W-24W) **268-570**

3X(26W-28W) **268-585**

reg. \$44.99

**\$34.99**

#### ❖ Faux Suede Belted Pant

Burnt sienna faux-suede pull-on pant with front pockets and removable fabric self-tie belt. Straight-leg fit. Polyester/spandex. Inseam: 28" on all sizes. Machine wash, line dry (remove belt before washing). Imported.

XS(0-2) **268-604**

L(12-14) **269-471**

2X(22W-24W) **269-543**

S(4-6) **268-700**

XL(16) **269-505**

3X(26W-28W) **269-581**

M(8-10) **269-448**

1X(18W-20W) **269-510**

reg. \$56.99

**\$44.99**

Luminous Tides Link Collection sold on page 155.

### A. ♦ Lace-Up Sneaker

White leatherlike lace-up sneaker with perforated floral design. Cushioned insole. Rubber outsole. Man-made materials. Imported.

6 883-644 9 883-955

7 883-659 10 883-960

8 883-850 11 884-067

reg. \$46.99

**\$36.99**

### B. ♦ 2-Pack Dresses\*

Two-pack classic T-shirt dresses in turquoise and turquoise/white stripe. Features round neckline and short sleeves. Solid-colored dress: polyester/rayon/spandex. Striped dress: polyester/cotton/spandex.

Center back length:

37" on M; 39" on 1X.

XS(0-2) 884-803 XL(16) 885-298

S(4-6) 884-822 1X(18W-20W) 885-374

M(8-10) 884-841 2X(22W-24W) 885-389

L(12-14) 885-192 3X(26W-28W) 885-431

reg. \$49.99

**\$39.99 the pack**

### C. ♦ Men's Polo Shirt

Classic polo shirt with short sleeves and two-button placket. Features rib trim on sleeves and collar. 100% cotton.

Center back length:

29" on M; 32" on XXL.

Machine wash and dry.

Imported.

reg. \$32.99

**\$24.99 each**

Grey:

S 765-587

M 765-610

L 765-663

XL 765-678

XXL 765-754

Navy:

S 765-390

M 765-405

L 765-439

XL 765-443

XXL 765-740

### D. ♦ Summer Rib

#### 2-Piece Set

Coral ribbed two-piece set.

Top features elastic scoop neck that can be worn off the shoulder, plus elastic at bottom of sleeves and hem.

Pull-on wide-leg pant has an elastic waistband. Polyester/spandex. Center back length: 19" on M; 21" on 1X.

Inseam: 29" on all sizes.

Machine wash and dry.

Imported.

XS(0-2) 883-242 XL(16) 883-371

S(4-6) 883-280 1X(18W-20W) 883-405

M(8-10) 883-295 2X(22W-24W) 883-568

L(12-14) 883-329 3X(26W-28W) 883-572

reg. \$56.99

**\$44.99 the set**

\*Machine wash, line dry. Imported.



### A. ♦ Tie-Front Button-Down Top\*

Red linen-blend top with V-neck, button placket, front tie detail and bell-shaped sleeves. Linen/rayon. Center back length: 20½" on M; 22½" on 1X. Line dry. XS(0-2) **763-728** XL(16) **763-766** S(4-6) **763-732** 1X(18W-20W) **763-770** M(8-10) **763-747** 2X(22W-24W) **763-785** L(12-14) **763-751** 3X(26W-28W) **763-790** reg. \$49.99

**\$39.99**

### B. ♦ Lace-Front Sleeveless Top\*

White lace-front top with jersey-knit trim and back panel. Features front placket with functional buttons and a sleeveless silhouette with front lining. Lace body: cotton/polyester. Back panel/trim: polyester/rayon/spandex. Lining: 100% polyester. Center back length: 26" on M; 27" on 1X.

XS(0-2) **887-669** XL(16) **887-817** S(4-6) **887-673** 1X(18W-20W) **887-931** M(8-10) **887-688** 2X(22W-24W) **887-946** L(12-14) **887-802** 3X(26W-28W) **887-984** reg. \$44.99

**\$34.99**

### C. ♦ Two-Tone Stripe Shirt\*

Blue/white stripe linen-blend shirt features button detail on front placket and on cuffed short sleeves. Cotton/linen. Center back length: 25" on M; 26½" on 1X.

XS(0-2) **886-199** XL(16) **886-309** S(4-6) **886-218** 1X(18W-20W) **886-351** M(8-10) **886-241** 2X(22W-24W) **886-457** L(12-14) **886-260** 3X(26W-28W) **886-476** reg. \$46.99

**\$36.99**

### D. ♦ Ruffle Bottom Skirt\*

Blue lightweight skirt features ruffle hem and self-tie belt at waist. Back zip. Lined. Body: rayon/polyester. Lining: 100% polyester. Center back length: 29½" on M; 30" on 1X.

XS(0-2) **886-480** XL(16) **887-449** S(4-6) **886-533** 1X(18W-20W) **887-597** M(8-10) **886-897** 2X(22W-24W) **887-601** L(12-14) **886-901** 3X(26W-28W) **887-654** reg. \$44.99

**\$34.99**

### E. ♦ Market Tote

Natural oversized canvas tote with contrasting peach straps and trim. Features front pocket. 100% cotton. 23¾" L x 8" W x 14" H. Handle drop: 10½" L. Imported. **676-161** reg. \$28.99

**\$21.99**



Liberty  
Collection  
sold on  
page 159.





**ALL NEW**

**Fierce Glam Drop Earrings**

Leopard print set in goldtone with textured accents. 1½" L. Pierced.

**604-627**

reg. \$12.99

**\$9.99**



**Fierce Twist Hoop Earrings**

Animal print plus goldtone braided chain. 1½" L. Pierced. **604-464**

reg. \$16.99

**\$12.99**



headband &  
scrunchie set



**Roar in Style Headband and Scrunchie Set**

Matching leopard-print set. Headband: polyester/man-made materials. Scrunchie: 100% polyester. **603-965** reg. \$19.99

**\$14.99 the set**

**NEW**  
**Serpentine  
 Glow Collection**  
 Textured  
 snakeskin-like  
 pattern set in  
 goldtone.

# spotted...

Leopard prints and  
 snakeskin-like textures unleash  
 a little wild style.

## A Wild Time Mesh Watch

Leopard-print mesh strap, 9" L.  
 Goldtone case with sunburst dial,  
 36mm diam. Water-resistant  
 to 3 ATM. **601-298**  
 reg. \$39.99

**\$31.99**

## Medallion Necklace

With glass accent stone. 16½" L.  
 with 3½" extender. Pendant, 2" L.  
 Lobster closure.

**601-431**  
 reg. \$19.99

**\$14.99**

## Drop Earrings

With CZ stone  
 accents and  
 glass beads.  
 2" L. Pierced.

**603-009**

reg. \$16.99

**\$12.99**

## Stretch Ring

¾" W. Stretches  
 to fit most.

**603-051**

reg. \$12.99

**\$9.99**



# follow your heart

Make your own  
sparkling statement.



A 606-323 B 606-357 C 607-702 D 607-736



E 607-755 G 607-808 J 608-178 K 608-182



L 609-160 M 609-380 N 609-394 P 609-470



R 611-170 S 611-261 T 611-276 V 611-314

## NEW

### Sparkling Heart Initial Necklace

Goldtone chain with pavé  
glass stones. 16½" L  
with 3½" extender.  
Pendant, approx. ¾" L.  
Lobster closure.  
reg. \$12.99

**\$9.99 each**



**NEW****Circle of Elegance Collection**

Goldtone with filigree detail and hematite-colored glass stone accents.

**Necklace**

32" L with 3½" extender. Pendant, 1" L. Lobster closure. **605-016**  
reg. \$16.99

**\$12.99**

**Earrings**

2" L. Pierced. **606-319**  
reg. \$12.99

**\$9.99**

**NEW****Violet Ivy Ombré Collection**

Marquise-cut glass stones in shades of violet set in goldtone.

**Necklace**

18½" L with 3½" extender. **611-333**  
reg. \$22.99

**\$16.99**

**Earrings**

Approx. 2" L. Pierced. **611-367**  
reg. \$19.99

**\$14.99**



## all tied up

A pretty pairing of ribbon and beads  
inspired by fall's rich palette.

**NEW**

**Autumn Glow Ribbon Necklace**

Ribbon with shades of brown beads  
set in goldtone. 18" L.

611-371 reg. \$22.99

**\$16.99**

# signs of the season

Clusters of colors and sweet symbols  
that capture the essence of fall.

necklace and  
earring sets

## Pumpkin Patch Necklace and Earring Set

Pumpkin and amber-  
hued glass beads with  
goldtone accents.  
16½" L with 3½"  
extender. Pendant,  
1" L. Lobster closure.  
Pierced drops, ½" L.

**477-726**

reg. \$16.99

**\$12.99 the set**

## Falling Leaves Necklace and Earring Set

Clusters of red and  
green glass beads  
set in goldtone.  
30" L with 3½"  
extender. Pendant,  
1" L. Lobster closure.  
Pierced drops, 3" L.

**477-817**

reg. \$22.99

**\$16.99 the set**





**TIGER'S EYE**  
symbolizes empowerment  
and inner strength.

**SODALITE**  
is associated with clarity,  
truth and self-expression.

**AMETHYST**  
represents emotional  
balance, understanding and  
patience.

# meaningful moments

Capture special memories with a  
semi-precious gemstone that speaks to you.

**Semi-Precious Keepsake Locket**  
Semi-precious stone. Goldtone chain, 16½" L  
with 3½" extender. Pendant fits approx.  
¾" L x ½" W photo. Lobster closure.  
Amethyst/Goldtone **477-119**  
Tiger's Eye/Goldtone **476-658**  
Sodalite/Silvertone **477-070**  
reg. \$22.99

**\$16.99 each**

**Warm Autumn Collection**

Warm-toned and goldtone beads with a white leatherlike braided cord.

**Beaded Necklace**

20½" L with 3½" extender. Lobster closure.

**474-602**

reg. \$22.99

**\$16.99****Beaded Bracelet**

Stretches to fit most.

**475-097**

reg. \$16.99

**\$12.99****Statement Earrings**

With burgundy bead accent. Approx. 1¾" L. Pierced.

**475-120**

reg. \$16.99

**\$12.99**

## timeless allure

Ornate filigree and burnished textural touches exude vintage-like glamour.

necklace and earring set

**Gilded Filigree Necklace and Earring Set**

Burnished filigree detail with golden and chocolate-colored stones.

Goldtone chain, 16½" L with 3½" extender.

Pendant drop, approx. 1" L. Pierced drops, approx. 1" L.

**475-173**

reg. \$24.99

**\$19.99 the set**

**Contour Links  
Collection**

Silvertone links  
with chain  
detailing.

**Necklace**

28" L with  
3½" extender.  
Lobster closure.

**477-453**

reg. \$19.99

**\$14.99**

**Earring Set**

Set of four hoops.  
Ranges from  
approx. ½"-¾" L.  
Pierced.

**477-487**

reg. \$16.99

**\$12.99 the set**

**Bracelet**

7½" L with  
1" extender.  
Lobster closure.

**477-468**

reg. \$12.99

**\$9.99**

set of 4 hoops



**Celestial Spark  
Necklace and  
Earring Set**

Garnet-like glass  
baguette stones with  
sparkling accents  
set in silvertone.  
16½" L with 3½"  
extender. Pendant,  
1" L. Lobster closure.  
Pierced earrings,  
½" L.

**477-472**

reg. \$19.99

**\$14.99 the set**

necklace and  
earring set

reach for  
the starburst

Blazing beauties alight with rich  
garnet-like shine.





**Boho Wanderer Collection**

Antiqued silvertone with a mix of textures and patterns.

**Statement Necklace**

With charms and mini coin accents. 28½" L with 3½" extender. Lobster closure.

**477-176**  
reg. \$22.99

**\$16.99**

# boho beauty

Antiqued...meets  
contemporary chic!

**Hoop Earrings**

Approx. 1¼" L. Pierced.

**477-290**

reg. \$12.99

**\$9.99**

**Drop Earrings**

With dangling accents.

Approx. 1¾" L. Pierced.

**477-324**

reg. \$12.99

**\$9.99**

**Coil Bracelet**

With coin charms.

One size fits most.

**477-233**

reg. \$16.99

**\$12.99**



# golden glamour

Make an impact in bold pieces  
with textured touches.



set of 2

## Rippled Heart Statement Earrings

Goldtone ribbed  
texture. Approx.  
1 1/4" L. Pierced.

**286-807**

reg. \$12.99

**\$10.99**

## Eternal Loop Statement Earrings

Goldtone solid and  
textured finishes.  
Approx. 1" L. Pierced.

**286-769**

reg. \$12.99

**\$9.99**

## Bold Chain Luxe Necklace

Goldtone intertwined  
links. 16 1/2" L with  
3 1/2" extender. Lobster  
closure. **286-697**  
reg. \$24.99

**\$19.99**

## Goldtone Signet Ring Set

Set of two goldtone  
signet and twisted  
rope rings.

6 **286-845**

8 **286-850**

10 **287-306**

reg. \$12.99

**\$9.99 the set**

## Rippled Flow Hoop Earrings

Goldtone ridged texture.  
Approx. 1 1/2" L. Pierced.

**286-811**

reg. \$12.99

**\$9.99**





# green & serene

A soothing, grounding hue, anchored by genuine jade.

**Verdant Luxe Beaded Collection**  
Shades of green glass beads and stones set in goldtone.

**Ring**  
¾" W.  
6 477-597  
8 477-688  
10 477-711  
reg. \$12.99  
**\$9.99**

**Drop Earrings**  
With CZ accents. 2" L.  
Pierced.  
477-530  
reg. \$9.99  
**\$7.99**

**Bracelet**  
7½" L.  
Spring-ring closure.  
477-506  
reg. \$12.99  
**\$9.99**

**Layered Necklace**  
With semi-precious jade pendant, 10 x 14mm. 16½" L with 3½" extender; longest layer, 18" L. Pendant drop, 1½" L. Lobster closure. 477-491  
reg. \$24.99  
**\$19.99**

semi-precious  
jade pendant



**Sunset Lagoon  
3-Piece Set**

Multicolor beads with  
goldtone accents.  
24" L with 3½"  
extender. Lobster  
closure. Pierced  
drops, 2½" L. Bracelet  
stretches to fit most.

**286-682**

reg. \$24.99

**\$19.99 the set**

## retro vibes

A cool, colorful  
and playful  
palette  
with fun flair.

necklace,  
earring and  
bracelet set



Owl/Purple  
292-010



Elephant/Blue  
291-745



Fox/Green  
291-750

3 removable pendants:  
wear together or  
separately



**Wild Wisdom Collection**  
Goldtone pendants or charms  
with glass stone accents.

**Pendant Necklace**  
Three removable pendants. 16½" L  
with 3½" extender. **291-415**  
reg. \$22.99

**\$16.99**

**Bracelet Set**  
Set of three. With colored faceted glass,  
pearly and wood beads, plus tassel.  
Stretches to fit most. reg. \$19.99

**\$14.99 each set**



**Luminous Tides Link Collection**  
Goldtone links adorned with the look of abalone.

**Necklace**  
20½" L with 3½" extender. **291-248**  
reg. \$22.99  
**\$16.99**

**Bracelet**  
7¼" L with 1" extender. **291-310**  
reg. \$12.99  
**\$9.99**

**Earrings**  
Approx. 1½" L. Pierced. **291-362**  
reg. \$12.99  
**\$9.99**

## STERLING SILVER

### Midnight Halo Watch

Black leatherlike strap, 9" L. Silvertone case with the look of abalone dial, 32mm diam. Water-resistant to 3 ATM.

**287-507**  
reg. \$39.99

**\$29.99**

### Sterling Silver Marcasite and Abalone Collection

Genuine abalone inlay with genuine marcasite pavé accents set in .925 sterling silver.

#### Ring

3/4" W.

5 **289-916**

6 **290-146**

7 **290-241**

8 **290-256**

9 **290-328**

10 **290-438**

reg. \$58.99

**\$49.99**

#### Necklace

17" L with 1" extender. Pendant, 1 1/2" L.

**287-511**  
reg. \$58.99

**\$49.99**

#### Earrings

1/2" L. Fish hook drops. Pierced.

**289-897**  
reg. \$58.99

**\$49.99**



genuine  
abalone and  
marcasite  
accents

# luxé and luminous

An interplay of shimmering shades evokes the mysteries of the ocean.



## STAINLESS STEEL

**Men's  
Stainless  
Steel Trailblazer  
Collection**

Stainless steel with gold ion-plating. Ion plating is a process that enhances the durability and brightness of the gold finish, providing long-lasting wear and a brilliant shine.

**Compass Necklace**

22" L. Pendant, 1½" L. Lobster closure. **291-180**  
reg. \$24.99

**\$19.99**

**Dog Tag Necklace**

With black textured design and CZ accent. 24" L. Pendant, 2" L. Lobster closure. **290-442**  
reg. \$32.99

**\$24.99**

**Ring**

With golden rope texture design.

9 290-533 12 290-753  
10 290-590 13 290-897  
11 290-715  
reg. \$24.99

**\$22.99**

**Bracelet**

With black leatherlike design.  
9" L. **290-457**  
reg. \$32.99

**\$29.99**

# cool contrasts

A striking combination of black leatherlike textures accented with golden shine.



**Sunlight  
Glow  
Collection**  
Blush pink  
and black  
glass  
beads with  
goldtone  
charm  
and accents.

**Pendant Necklace**  
16½" L with 3½" extender.  
772-509 reg. \$16.99

**\$12.99**

**Stretch Bracelet**  
Stretches to fit most.  
772-513 reg. \$12.99

**\$9.99**



**Moonlight  
Glow  
Collection**  
Iridescent  
and black  
glass  
beads with  
silvertone  
charm  
and accents.

**Pendant Necklace**  
16½" L with 3½" extender.  
772-528 reg. \$16.99

**\$12.99**

**Stretch Bracelet**  
Stretches to fit most.  
772-547 reg. \$12.99

**\$9.99**

set of 4 pairs



can also be  
worn  
as hoops  
with  
removable  
charm

**Mixed Glow Earring Pack**

4-pair mixed metal set with sparkling accents.  
Goldtone hoop/drop earrings feature removable star  
charm with glass CZ stone. All under 1" L. Pierced.  
885-446 reg. \$16.99

**\$12.99 the set**

**Soft Sands  
Beaded  
Collection**  
Semi-  
precious  
quartz  
stones,  
neutral-  
toned beads  
and goldtone  
accents.

**Necklace**  
28" L  
with 3½"  
extender.  
885-518  
reg. \$24.99

**\$19.99**

**Bracelet**  
Stretches to  
fit most.  
885-719  
reg. \$12.99

**\$9.99**





**Liberty Collection**

Red, white and blue glass beads with goldtone accents.

**Layered Necklace**

Three-layer necklace with Murano glass accent beads and goldtone pendant.

16½" L with 3½" extender.

888-665

reg. \$24.99

**\$19.99**

**Linear Earrings**

With Murano glass accent beads.

Approx. 2½" L.

Pierced.

888-684

reg. \$12.99

**\$9.99**

**Statement Bracelet**

Seven-layer

bracelet. 8½" L.

Lobster closure.

888-670

reg. \$19.99

**\$14.99**

**Stripe Nylon Watch**

Nylon strap, 9" L

with 34mm diam.

goldtone case.

Water-resistant

to 3 ATM.

888-650

reg. \$39.99

**\$29.99**



Red and blue accent stones set in antiqued silvertone with hammered texture.

**1½" L. Pierced.**  
**883-625**  
reg. \$12.99

**883-630**  
reg. \$12.99

Antiqued silvertone with  
hammered texture.

**883-610**  
reg. \$9.99

A large, ornate silver necklace with a central blue teardrop pendant and two red oval pendants. The necklace features intricate silverwork and is displayed against a dark background.



26" L with 3½"  
extender. Pendant,  
1½" L. Lobster  
closure. **883-587**  
reg. \$22.99

**\$16.99**

Crystal glass stones set in silvertone.

Necklace,  
16½" L with  
3½" extender.  
Pendant,  
approx.  
2" L. Pierced  
earrings, 1¼" L.

Ring sizes:  
6 **887-999**  
8 **888-005**  
10 **888-043**  
req. \$24.99

the set

7¼" L with  
1" extender.  
Lobster  
closure.

**888-058**  
reg. \$9.99

**\$7.99**

necklace,  
earring and  
ring set



## STAINLESS STEEL

blue  
blaze

A striking,  
shimmering aqua stone  
takes center stage.

**Forever Daisy  
Stainless Steel  
Aqua CZ Collection**  
Aqua-colored CZ  
center stone with clear  
stone accents set  
in stainless steel.

**Bracelet**

One size fits most.  
.75-carat total weight  
equivalent. **888-646**  
reg. \$49.99

**\$39.99****Necklace**

17" L with 1" extender.  
.75-carat total weight  
equivalent.

**888-517**

reg. \$46.99

**\$36.99****Ring**

1/2" W. .5-carat total  
weight equivalent.

Sizes:

5 **888-536** 7 **888-593** 9 **888-627**6 **888-589** 8 **888-608** 10 **888-631**

reg. \$46.99

**\$36.99****Earrings**

1" L. 1-carat  
total weight  
equivalent.

Pierced.

**888-521**

reg. \$49.99

**\$39.99**

# earthy elegance

Layer up on luxe strands of gem-like shades.

## NEW

### Vine & Olive Collection

Goldtone with shades of purple, grey and olive green beads.

### Layered Necklace

Shortest layer: 16½" L with 3½" extender; longest layer, 20" L. Lobster closure.

611-386

reg. \$24.99

**\$19.99**

### Drop Earrings

With CZ stone accent. Approx. 1½" L. Fish hook. Pierced.

611-424

reg. \$12.99

**\$9.99**

### Layered Bracelet

7½" L. Lobster closure.

611-390

reg. \$16.99

**\$12.99**



**NEW****Whispering Sky Collection**

Soft shades of blue enamel with a swirl technique set in goldtone.

**Bracelet**

7½" L. Lobster closure.  
**611-458**  
 reg. \$16.99  
**\$12.99**

**Statement Ring**

With white cat-eye glass stone.  
 6 **611-477**  
 8 **611-481**  
 10 **611-515**  
 reg. \$12.99  
**\$9.99**

**Necklace**

38" L with 3½" extender. Lobster closure.  
**611-439**  
 reg. \$24.99  
**\$19.99**

**Clip-On Earrings**

With white cat-eye glass stone. Approx. 1" L. Clip on. **611-443**  
 reg. \$16.99  
**\$12.99**

# whimsical wonders

Swirls of light blue hues lend a romantic flourish.

clip-on earrings

❖ BEAUTY GRAB BAG

# 4-PIECE SET

## ONLY \$39.99

WITH ANY \$10 BROCHURE PURCHASE

❖ Beauty Grab Bag Set Includes:

- **On-The-Run Crossbody Bag**  
Black crossbody bag features zip pockets on front, adjustable strap with metal buckle and ring to attach key fob. Includes inside slotted pockets. Body: 100% nylon. Lining: 100% polyester. Trim: man-made materials. 9½" L x 3¾" W x 15½" H. Strap: 34½" L [fully extended]. Imported. **\$39.99 value** (Not sold separately.)
- **Isa Knox Anew Clinical Revitalize & Reveal Advanced Wrinkle Corrector**  
1.7 fl. oz.  
**\$40 value**
- **Isa Knox Anew Clinical Collagen Booster Eye Lift Pro Dual Eye System**  
Gel, .33 fl. oz.  
Cream, .33 fl. oz.  
**\$40 value**
- **Avon Classics Dreamlife Cologne**  
Soft floral. Mimosa flower, rose and amber. 1.7 fl. oz.  
**\$20 value**

215-690

**\$139.99 if purchased separately.**

Beauty Grab Bag 4-Piece Set purchase does not qualify towards this or any other offer and is available this Brochure only.



### CAMPAIGN 18, 2025

THE AVON COMPANY  
165 BROADWAY, NY, NY 10006

**avon.com**



See our commitment at  
[www.avon.com/animal-welfare](http://www.avon.com/animal-welfare)

**RETURN POLICY** If you are not satisfied, return any item within 45 days. View Avon's full 45-Day Return Policy at [avon.com/shipping-returns](http://avon.com/shipping-returns).



8 88761 73055 4

Pk of 10 4764671



8 88761 73057 8

Single 4764691

© 2025 The Avon Company. All rights reserved.